

Anti-Protein TIC21, chloroplastic antibody

Catalog: PHY0871S

Product Information

Description:	Rabbit polyclonal antibody
Background:	CIA5 is a 21-kD integral membrane protein in the chloroplast inner envelope membrane with four predicted transmembrane domains, similar to another potential chloroplast inner membrane protein-conducting channel, At Tic20 (AT1G04940), and the mitochondrial inner membrane counterparts Tim17, Tim22, and Tim23.
Synonyms:	TIC21, ATTIC21, CHLOROPLAST IMPORT APPARATUS 5, CIA5, PERMEASE IN CHLOROPLASTS 1, PIC1, TRANSLOCON AT INNER MEMBRANE OF CHLOROPLASTS 21
Immunogen:	KLH-conjugated synthetic peptide (25 aa from central section) derived from <i>Arabidopsis thaliana</i> TIC21 (AT2G15290).
Form:	Lyophilized
Quantity:	150 µg
Purification:	Serum Peptide affinity form antibody available upon request at info@phytoab.com .
Reconstitution:	Reconstitution with 150 µl of sterile water. "Note: please spin tube briefly prior to opening it to avoid any losses that might occur from lyophilized material adhering to the cap or sides of the tube".
Stability & Storage:	Use a manual defrost freezer and avoid repeated freeze-thaw cycles. 12 months from date of receipt, -20 to -70°C as supplied. 6 months, -20 to -70°C under sterile conditions after reconstitution. 1 month, 2 to 8°C under sterile conditions after reconstitution.
Shipping:	The product is shipped at 4°C. Upon receipt, store it immediately at the temperature recommended above.

Application Information

Recommended Dilution:	Western Blot (1:1000-1:5000) Note: Optimal dilutions/concentrations should be determined by the end user.
Expected / apparent MW:	31 / 21 kDa

Research Use Only

Confirmed Reactivity:

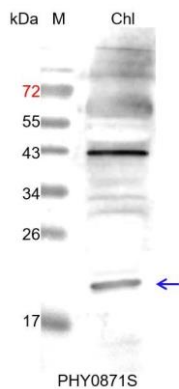
Arabidopsis thaliana

Predicted Reactivity:

Among species analyzed, the sequence of the synthetic peptide used for immunization is 100% homologues with the sequence in *Brassica napus*, *Brassica rapa*, and 80-99% homologues with the sequence in *Cucumis sativus*, *Glycine max*, *Populus trichocarpa*, *Gossypium raimondii*, *Medicago truncatula*, *Vitis vinifera*, *Nicotiana tabacum*, *Spinacia oleracea*, *Solanum tuberosum*.

For more species homologues information, please contact tech support at tech@phytoab.com.

Application Example



Chl: 5 µl total chloroplast protein from *Arabidopsis thaliana*.

Electrophoresis: 15% SDS-PAGE

Transfer: blotting to NC (nitrocellulose) membrane for 1 h.

Blocking: 5% skim milk at RT or 4°C for 1 h.

Primary antibody: 1:5000 dilution overnight at 4°C.

Secondary antibody: 1:10000 dilution using Goat Anti-Rabbit IgG

H&L(HRP) (Cat# PHY6000).

Detection: using chemiluminescence substrate and image were captured with CCD camera.