

Anti-V-type proton ATPase subunit B1/3, C-terminal antibody

Catalog: PHY2229S

Product Information

Description:	Rabbit polyclonal antibody
Background:	<i>Arabidopsis</i> V-ATPase has three B subunits (AtVAB1, AtVAB2, and AtVAB3), which share 97.27% sequence identity and have two potential actin-binding sites, indicating that these AtVABs may have crucial functions in actin cytoskeleton remodeling and plant cell development.
Synonyms:	VAB1/3, ATVAB1/3, V-ATPASE B SUBUNIT 1/3
Immunogen:	KLH-conjugated synthetic peptide (16 aa from C terminal section) derived from <i>Arabidopsis thaliana</i> VAB1 (AT1G76030), VAB3 (AT1G20260).
Form:	Lyophilized
Quantity:	150 µg
Purification:	Serum Peptide affinity form antibody available upon request at info@phytoab.com .
Reconstitution:	Reconstitution with 150 µl of sterile water. "Note: please spin tube briefly prior to opening it to avoid any losses that might occur from lyophilized material adhering to the cap or sides of the tube".
Stability & Storage:	Use a manual defrost freezer and avoid repeated freeze-thaw cycles. 12 months from date of receipt, -20 to -70°C as supplied. 6 months, -20 to -70°C under sterile conditions after reconstitution. 1 month, 2 to 8°C under sterile conditions after reconstitution.
Shipping:	The product is shipped at 4°C. Upon receipt, store it immediately at the temperature recommended above.

Application Information

Recommended Dilution:	Western Blot (1:1000-1:2000) Note: Optimal dilutions/concentrations should be determined by the end user.
Expected / apparent MW:	54 kDa
Confirmed Reactivity:	<i>Arabidopsis thaliana</i>

Research Use Only

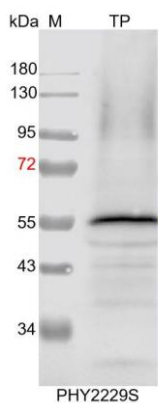
Predicted Reactivity:

Among species analyzed, the sequence of the synthetic peptide used for immunization is 100% homologues with the sequence in *Brassica rapa*, *Brassica napus*, and 80-99% homologues with the sequence in *Hordeum vulgare*, *Triticum aestivum*, *Oryza sativa*, *Glycine max*, *Gossypium raimondii*, *Populus trichocarpa*, *Medicago truncatula*, *Sorghum bicolor*, *Setaria viridis*, *Panicum virgatum*, *Nicotiana tabacum*, *Zea mays*, *Vitis vinifera*, *Solanum lycopersicum*.

The sequence of the synthetic peptide used for immunization is 94% homologues with the sequence in VAB2 (AT4G38510).

For more species homologues information, please contact tech support at tech@phytoab.com.

Application Example



TP: 20 µg total protein from *Arabidopsis thaliana*.

Electrophoresis: 12% SDS-PAGE

Transfer: blotting to NC (nitrocellulose) membrane for 1 h.

Blocking: 5% skim milk at RT or 4°C for 1 h.

Primary antibody: 1:1000 dilution overnight at 4°C.

Secondary antibody: 1:10000 dilution using Goat Anti-Rabbit IgG H&L (HRP) (Cat# PHY6000)

Detection: using chemiluminescence substrate and image were captured with CCD camera.