

# Anti-Catalase-3 antibody

Catalog: PHY1535A

## Product Information

<b>Description:</b>	Rabbit polyclonal antibody
<b>Background:</b>	Catalase is one of the most important antioxidant enzymes that catalyze the decomposition of H <sub>2</sub> O <sub>2</sub> . CAT3 has been found to interact with several proteins, such as nucleoside diphosphate kinase, NDK1 (AT4G09320), class 3 sucrose-nonfermenting 1-related kinase, SOS2 (AT5G35410), and LESION SIMULATING DISEASE1, LSD1 (AT4G20380).
<b>Synonyms:</b>	CAT3, ATCAT3, CATALASE 3, SEN2, SENESCENCE 2
<b>Immunogen:</b>	KLH-conjugated synthetic peptide (15 aa from C terminal section) derived from <i>Arabidopsis thaliana</i> CAT3 (AT1G20620).
<b>Form:</b>	Lyophilized
<b>Quantity:</b>	150 µg
<b>Purification:</b>	Immunogen affinity purified
<b>Reconstitution:</b>	Reconstitution with 150 µl of 0.01 M sterile PBS. "Note: please spin tube briefly prior to opening it to avoid any losses that might occur from lyophilized material adhering to the cap or sides of the tube".
<b>Stability &amp;Storage:</b>	Use a manual defrost freezer and avoid repeated freeze-thaw cycles. 12 months from date of receipt, -20 to -70°C as supplied. 6 months, -20 to -70°C under sterile conditions after reconstitution. 1 month, 2 to 8°C under sterile conditions after reconstitution.
<b>Shipping:</b>	The product is shipped at 4°C. Upon receipt, store it immediately at the temperature recommended above.

## Application Information

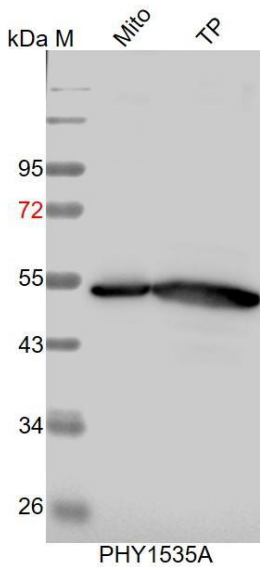
<b>Recommended Dilution:</b>	Western Blot (1:1000-1:2000) Note: Optimal dilutions/concentrations should be determined by the end user.
<b>Expected / apparent MW:</b>	57 / 54 kDa
<b>Confirmed Reactivity:</b>	<i>Arabidopsis thaliana</i>
<b>Predicted Reactivity:</b>	Among species analyzed, the sequence of the synthetic peptide used

Research Use Only

for immunization is 80-99% homologues with the sequence in *Brassica rapa*, *Brassica napus*.

For more species homologues information, please contact tech support at [tech@phytoab.com](mailto:tech@phytoab.com).

## Application Example



Mito: 10µg mitochondria protein from *Arabidopsis thaliana*.

TP: 30 µg total protein from *Arabidopsis thaliana*.

**Electrophoresis:** 12% SDS-PAGE

**Transfer:** blotting to NC (nitrocellulose) membrane for 1 h.

**Blocking:** 5% skim milk at RT or 4°C for 1 h.

**Primary antibody:** 1:1000 dilution overnight at 4°C.

**Secondary antibody:** 1:10000 dilution using Goat Anti-Rabbit IgGH&L(HRP) (Cat# PHY6000).

**Detection:** using chemiluminescence substrate and image were aptured with CCD camera.