

# Anti-[Ribulose-bisphosphate carboxylase]-lysine N-methyltransferase-like antibody

Catalog: PHY0401S

## Product Information

<b>Description:</b>	Rabbit polyclonal antibody
<b>Background:</b>	In <i>Arabidopsis thaliana</i> , [Ribulose-bisphosphate carboxylase]-lysine N-methyltransferase-like (RMT) can use with low efficiency gamma-tocopherol methyltransferase as substrate, but it isn't a cytosolic aldolase. RMT can also be able to interact with unmethylated Rubisco, but unlike in pea, the complex is catalytically unproductive.
<b>Synonyms:</b>	RMT, LSMT-L, LYSINE METHYLTRANSFERASE (LSMT)-LIKE
<b>Immunogen:</b>	KLH-conjugated synthetic peptide (15 aa from central section) derived from <i>Arabidopsis thaliana</i> RMT (AT1G14030).
<b>Form:</b>	Lyophilized
<b>Quantity:</b>	150 µg
<b>Purification:</b>	Serum Peptide affinity form antibody available upon request at <a href="mailto:info@phytoab.com">info@phytoab.com</a> .
<b>Reconstitution:</b>	Reconstitution with 150 µl of sterile water. "Note: please spin tube briefly prior to opening it to avoid any losses that might occur from lyophilized material adhering to the cap or sides of the tube".
<b>Stability &amp; Storage:</b>	Use a manual defrost freezer and avoid repeated freeze-thaw cycles. 12 months from date of receipt, -20 to -70°C as supplied. 6 months, -20 to -70°C under sterile conditions after reconstitution. 1 month, 2 to 8°C under sterile conditions after reconstitution.
<b>Shipping:</b>	The product is shipped at 4°C. Upon receipt, store it immediately at the temperature recommended above.

## Application Information

<b>Recommended Dilution:</b>	Western Blot (1:1000-1:2000) Note: Optimal dilutions/concentrations should be determined by the end user.
<b>Expected / apparent MW:</b>	55 / 48 kDa
<b>Confirmed Reactivity:</b>	<i>Arabidopsis thaliana</i>

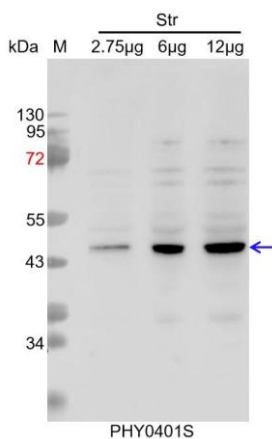
Research Use Only

## Predicted Reactivity:

Among species analyzed, the sequence of the synthetic peptide used for immunization is 80-99% homologues with the sequence in *Brassica rapa*, *Brassica napus*, *Sorghum bicolor*.

For more species homologues information, please contact tech support at [tech@phytoab.com](mailto:tech@phytoab.com).

## Application Example



Str 2.75 µg, 6 µg and 12 µg stromal protein from *Arabidopsis thaliana*, respectively.

**Electrophoresis:** 12.5% SDS-Urea-PAGE

**Transfer:** blotting to NC (nitrocellulose) membrane for 1 h.

**Blocking:** 5% skim milk at RT or 4°C for 1 h.

**Primary antibody:** 1:2000 dilution overnight at 4°C.

**Secondary antibody:** 1:20000 dilution using Goat Anti-Rabbit IgG H&L (HRP) (Cat# PHY6000).

**Detection:** using chemiluminescence substrate and image were captured with CCD camera.