

Anti-Ribosome associated endonuclease (CRB) antibody

Catalog: PHY0158

Product Information

Description:	Rabbit polyclonal antibody
Background:	CSP41 protein has been shown to bind and cleave chloroplast RNA <i>in vitro</i> . <i>Arabidopsis thaliana</i> genome encodes two copies of this protein CSP41a (AT3G63140) and CSP41b (AT1G09340), and they interact each other physically. It has been suggested that CSP41a and CSP41b have a role in chloroplast ribosomal RNA metabolism, most likely acting in the final steps of 23S rRNA maturation.
Synonyms:	CSP41b, CHLOROPLAST RNA BINDING, CHLOROPLAST STEM-LOOP BINDING PROTEIN OF 41 KDA, CRB, HETEROGLYCAN-INTERACTING PROTEIN 1.3, HIP1.3
Immunogen:	KLH-conjugated synthetic peptide (14 aa from C terminal section) derived from <i>Arabidopsis thaliana</i> CSP41b (AT1G09340).
Form:	Lyophilized
Quantity:	150 µg
Purification:	Protein A purified
Reconstitution:	Reconstitution with 150 µl of 0.01 M sterile PBS. "Note: please spin tube briefly prior to opening it to avoid any losses that might occur from lyophilized material adhering to the cap or sides of the tube".
Stability & Storage:	Use a manual defrost freezer and avoid repeated freeze-thaw cycles. 12 months from date of receipt, -20 to -70°C as supplied. 6 months, -20 to -70°C under sterile conditions after reconstitution. 1 month, 2 to 8°C under sterile conditions after reconstitution.
Shipping:	The product is shipped at 4°C. Upon receipt, store it immediately at the temperature recommended above.

Application Information

Recommended Dilution:	Western Blot (1:1000-1:4000) Note: Optimal dilutions/concentrations should be determined by the end user.
------------------------------	--

Research Use Only

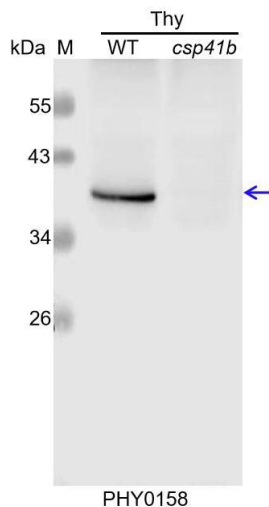
Expected / apparent MW: 43 / 39 kDa

Confirmed Reactivity: *Arabidopsis thaliana*

Predicted Reactivity: Among species analyzed, the sequence of the synthetic peptide used for immunization is 100% homologues with the sequence in *Brassica napus*, *Brassica rapa*, *Panicum virgatum*, *Vitis vinifera*, *Solanum tuberosum*, *Solanum lycopersicum*, *Gossypium raimondii*, *Nicotiana tabacum*, *Zea mays*, and 80-99% homologues with the sequence in *Hordeum vulgare*, *Physcomitrium patens*, *Sorghum bicolor*, *Cucumis sativus*, *Populus trichocarpa*, *Triticum aestivum*, *Oryza sativa*, *Setaria viridis*, *Glycine max*, *Medicago truncatula*, *Spinacia oleracea*, *Chlamydomonas reinhardtii*.

For more species homologues information, please contact tech support at tech@phytoab.com.

Application Example



Thy-WT: thylakoid membrane protein from WT of *Arabidopsis thaliana* containing 30 µg of chlorophyll.

Thy-*csp41b*: thylakoid membrane protein from an *ndh* mutant of *Arabidopsis thaliana* containing 30 µg of chlorophyll.

Electrophoresis: 15% SDS-PAGE

Transfer: blotting to NC (nitrocellulose) membrane for 1 h.

Blocking: 5% skim milk at RT or 4°C for 1 h.

Primary antibody: 1:4000 dilution overnight at 4°C.

Secondary antibody: 1:20000 dilution using Goat Anti-Rabbit IgG

H&L(HRP) (Cat# PHY6000).

Detection: using chemiluminescence substrate and image were captured with CCD camera.