

Anti-Superoxide dismutase [Cu-Zn] 1 antibody

Catalog: PHY2874S

Product Information

Description:	Rabbit polyclonal antibody
Background:	CSD1 encodes a cytosolic copper/zinc superoxide dismutase that can detoxify superoxide radicals. Its expression is affected by miR398-directed mRNA cleavage. And CSD1 is regulated by biotic and abiotic stress. Activation of CSD1 in the cytoplasm involves both a CCS-dependent and -independent pathway.
Synonyms:	CSD1, ATSOD1, COPPER/ZINC SUPEROXIDE DISMUTASE 1, SOD1, SUPEROXIDE DISMUTASE 1
Immunogen:	KLH-conjugated synthetic peptide (16 aa from Central section) derived from <i>Arabidopsis thaliana</i> CSD1(AT1G08830).
Form:	Lyophilized
Quantity:	150 µg
Purification:	Serum Peptide affinity form antibody available upon request at info@phytoab.com .
Reconstitution:	Reconstitution with 150 µl of sterile water. "Note: please spin tube briefly prior to opening it to avoid any losses that might occur from lyophilized material adhering to the cap or sides of the tube".
Stability &	Use a manual defrost freezer and avoid repeated freeze-thaw cycles.
Storage:	12 months from date of receipt, -20 to -70°C as supplied. 6 months, -20 to -70°C under sterile conditions after reconstitution. 1 month, 2 to 8°C under sterile conditions after reconstitution.
Shipping:	The product is shipped at 4°C. Upon receipt, store it immediately at the temperature recommended above.

Application Information

Recommended Dilution:	Western Blot (1:1000-1:4000) Note: Optimal dilutions/concentrations should be determined by the end user.
Expected / apparent MW:	15 kDa

Research Use Only

Confirmed Reactivity:

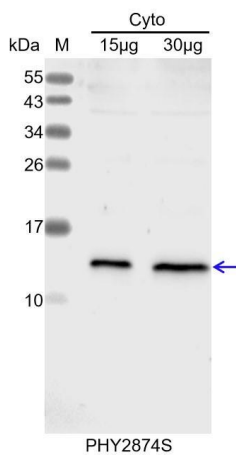
Arabidopsis thaliana

Predicted Reactivity:

Among species analyzed, the sequence of the synthetic peptide used for immunization is 100% homologues with the sequence in *Brassica napus*, *Brassica rapa*, and 80-99% homologues with the sequence in *Physcomitrium patens*, *Cucumis sativus*, *Vitis vinifera*, *Nicotiana tabacum*, *Panicum virgatum*, *Gossypium raimondii*, *Sorghum bicolor*, *Populus trichocarpa*, *Setaria viridis*, *Zea mays*, *Glycine max*, *Oryza sativa*.

For more species homologues information, please contact tech support at tech@phytoab.com.

Application Example



Cyto: 15 µg and 30 µg cytosolic protein from *Arabidopsis thaliana*, respectively.

Electrophoresis: 15% SDS-PAGE

Transfer: blotting to NC (nitrocellulose) membrane for 1 h.

Blocking: 5% skim milk at RT or 4°C for 1 h.

Primary antibody: 1:4000 dilution overnight at 4°C.

Secondary antibody: 1:10000 dilution using Goat Anti-Rabbit IgG &L (HRP) (Cat# PHY6000).

Detection: using chemiluminescence substrate and image were captured with CCD camera.