

Anti-Low PSII Accumulation 1 antibody

Catalog: PHY0481S

Product Information

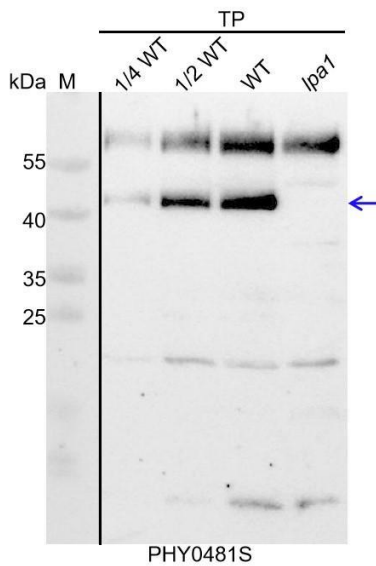
Description:	Rabbit polyclonal antibody
Background:	LPA1 is a chloroplast protein that contains two tetratricopeptide repeat domains and is an intrinsic membrane protein but not an integral subunit of PSII. In Arabidopsis, LPA1 interacts with PSII reaction center protein D1 and participates in the assembly of PSII.
Synonyms:	LPA1, LOW PSII ACCUMULATION1
Immunogen:	Recombinant protein (251-453 aa) derived from <i>Arabidopsis thaliana</i> LPA1 (AT1G02910).
Form:	Lyophilized
Quantity:	150 µg
Purification:	Serum
Reconstitution:	Reconstitution with 150 µl of 0.01 M sterile PBS. "Note: please spin tube briefly prior to opening it to avoid any losses that might occur from lyophilized material adhering to the cap or sides of the tube".
Stability & Storage:	Use a manual defrost freezer and avoid repeated freeze-thaw cycles. 12 months from date of receipt, -20 to -70°C as supplied. 6 months, -20 to -70°C under sterile conditions after reconstitution. 1 month, 2 to 8°C under sterile conditions after reconstitution.
Shipping:	The product is shipped at 4°C. Upon receipt, store it immediately at the temperature recommended above.

Application Information

Recommended Dilution:	Western Blot(1:1000-1:2000) Note: Optimal dilutions/concentrations should be determined by the end user.
Expected / apparent MW:	51 / 41 kDa
Confirmed Reactivity:	<i>Arabidopsis thaliana</i>
Predicted Reactivity:	For more species homologues information, please contact tech support at tech@phytoab.com .

Research Use Only

Application Example



Thy-WT: thylakoid membrane protein from *Arabidopsis thaliana* containing 0.625 μ g (1/4 WT), 1.25 μ g (1/2 WT) and 2.5 μ g (WT) of chlorophyll, respectively.

Thy-*lpa1*: thylakoid membrane protein from a *lpa1* mutant of *Arabidopsis thaliana* containing 2.5 μ g of chlorophyll.

Electrophoresis: 15% SDS-Urea-PAGE

Transfer: blotting to NC (nitrocellulose) membrane for 1 h.

Blocking: 5% skim milk at RT or 4°C for 1 h.

Primary antibody: 1:1000 dilution overnight at 4°C.

Secondary antibody: 1:10000 dilution using Goat Anti-Rabbit IgG H&L(HRP) (Cat# PHY6000).

Detection: using chemiluminescence substrate and image were captured with CCD camera.