

# Anti-PsbE subunit of Photosystem II, C-terminal antibody

Catalog: PHY3491A

## Product Information

|                                 |   |
|---------------------------------|---|
| <b>Description:</b>             | Rabbit polyclonal antibody  |
| <b>Background:</b>              | PsbE subunit of PSII is also called cytochrome b559 $\alpha$ . It is a small subunit of PSII and localized in the PSII reaction center. This subunit may play a protective role by acting as an electron acceptor or electron donor.  |
| <b>Synonyms:</b>                | PsbE, PHOTOSYSTEM II REACTION CENTER PROTEIN E, Cyt b559 $\alpha$   |
| <b>Immunogen:</b>               | KLH-conjugated synthetic peptide (14 aa from C terminal section) derived from <i>Arabidopsis thaliana</i> PsbE (ATCG00580).   |
| <b>Form:</b>                    | Lyophilized   |
| <b>Quantity:</b>                | 150 $\mu$ g   |
| <b>Purification:</b>            | Immunogen affinity purified   |
| <b>Reconstitution:</b>          | Reconstitution with 150 $\mu$ l of 0.01 M sterile PBS.<br>"Note: please spin tube briefly prior to opening it to avoid any losses that might occur from lyophilized material adhering to the cap or sides of the tube".   |
| <b>Stability &amp; Storage:</b> | Use a manual defrost freezer and avoid repeated freeze-thaw cycles.<br>12 months from date of receipt, -20 to -70°C as supplied.<br>6 months, -20 to -70°C under sterile conditions after reconstitution.<br>1 month, 2 to 8°C under sterile conditions after reconstitution. |
| <b>Shipping:</b>                | The product is shipped at 4°C. Upon receipt, store it immediately at the temperature recommended above.   |

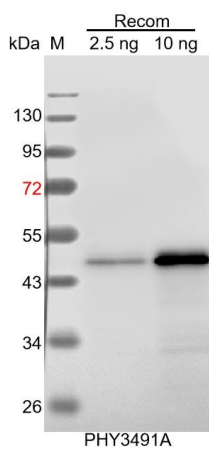
## Application Information

|                                |  |
|--------------------------------|--|
| <b>Recommended Dilution:</b>   | Western Blot (1:1000-1:2000)<br>Note: Optimal dilutions/concentrations should be determined by the end user.                               |
| <b>Expected / apparent MW:</b> | 9 kDa  |
| <b>Confirmed Reactivity:</b>   | Coming soon  |
| <b>Predicted Reactivity:</b>   | Among species analyzed, the sequence of the synthetic peptide used for immunization is 100% homologues with the sequence in <i>Glycine</i> |

Research Use Only

max, and 80-99% homologues with the sequence in *Gossypium raimondii*, *Oryza sativa*, *Physcomitrella patens*, *Brassica napus*, *Sorghum bicolor*, *Spinacia oleracea*, *Triticum aestivum*, *Hordeum vulgare*, *Medicago truncatula*, *Brassica rapa*, *Nicotiana tabacum*. For more species homologues information, please contact tech support at [tech@phytoab.com](mailto:tech@phytoab.com).

## Application Example



Recom: 2.5 ng and 10 ng recombinant protein containing the peptide for immunization and having a molecular mass of 47 kDa.

**Electrophoresis:** 12% SDS-PAGE

**Transfer:** blotting to NC (nitrocellulose) membrane for 1 h.

**Blocking:** 5% skim milk at RT or 4°C for 1 h.

**Primary antibody:** 1:1000 dilution overnight at 4°C.

**Secondary antibody:** 1:10000 dilution using Goat Anti-Rabbit IgG H&L (HRP) (Cat# PHY6000).

**Detection:** using chemiluminescence substrate and image were captured with CCD camera.