

Anti-Lhca4 protein of LHCI antibody

Catalog: PHY0666A

Product Information

Description:	Rabbit polyclonal antibody
Background:	The light-harvesting complex (LHC) functions as a light receptor, it captures and delivers excitation energy to photosystem with which it is closely associated. The light-harvesting protein Lhca4 is one of the four main and highly conserved types of chlorophyll a/b-binding proteins (Lhca1-4) of the light harvesting antenna (LHCI) of plant photosystem I. Lhca4 is imported as a precursor from the cytosol into the chloroplast. Upon insertion into the thylakoid membrane Lhca4 forms a heterodimer (LHCI-730) with Lhca1 that associates with the PSI core close to PsaG and PsaF.
Synonyms:	Lhca4, CAB4, LHCA4, LIGHT-HARVESTING CHLOROPHYLL-PROTEIN COMPLEX I SUBUNIT A4
Immunogen:	KLH-conjugated synthetic peptide (15 aa from C terminal section) derived from <i>Arabidopsis thaliana</i> Lhca4 (AT3G47470).
Form:	Lyophilized
Quantity:	150 µg
Purification:	Immunogen affinity purified
Reconstitution:	Reconstitution with 150 µl of 0.01 M sterile PBS. "Note: please spin tube briefly prior to opening it to avoid any losses that might occur from lyophilized material adhering to the cap or sides of the tube".
Stability & Storage:	Use a manual defrost freezer and avoid repeated freeze-thaw cycles. 12 months from date of receipt, -20 to -70°C as supplied. 6 months, -20 to -70°C under sterile conditions after reconstitution. 1 month, 2 to 8°C under sterile conditions after reconstitution.
Shipping:	The product is shipped at 4°C. Upon receipt, store it immediately at the temperature recommended above.

Application Information

Recommended Dilution:	Western Blot (1:1000-1:2000) Note: Optimal dilutions/concentrations should be determined by the end user.
------------------------------	--

Research Use Only

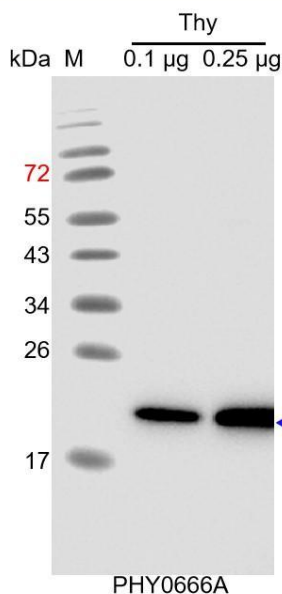
Expected / apparent MW: 28 / 23 kDa

Confirmed Reactivity: *Arabidopsis thaliana*

Predicted Reactivity: Among species analyzed, the sequence of the synthetic peptide used for immunization is 80-99% homologues with the sequence in *Solanum lycopersicum*, *Vitis vinifera*, *Solanum tuberosum*, *Nicotiana tabacum*, *Medicago truncatula*, *Panicum virgatum*, *Glycine max*, *Zea mays*, *Spinacia oleracea*, *Brassica rapa*, *Gossypium raimondii*, *Cucumis sativus*, *Sorghum bicolor*, *Setaria viridis*, *Populus trichocarpa*, *Oryza sativa*, *Triticum aestivum*, *Hordeum vulgare*, *Cucumis sativus*.

For more species homologues information, please contact tech support at tech@phytoab.com.

Application Example



Thy: Thylakoid membrane protein from *Arabidopsis thaliana* containing 0.1 µg and 0.25 µg of chlorophyll, respectively.

Electrophoresis: 15% SDS-PAGE

Transfer: blotting to NC (nitrocellulose) membrane for 1 h.

Blocking: 5% skim milk at RT or 4°C for 1 h.

Primary antibody: 1:2000 dilution overnight at 4°C.

Secondary antibody: 1:10000 dilution using Goat Anti-Rabbit IgG H&L (HRP) (Cat# PHY6000)

Detection: using chemiluminescence substrate and image were captured with CCD camera.