

Anti-PsbR subunit of Photosystem II antibody

Catalog: PHY0110A

Product Information

Description:	Rabbit polyclonal antibody
Background:	PsbR is the subunit of photosystem II (PSII) with a molecular mass of 10 kDa. This subunit appears to be involved in the stable assembly of PSII, particularly that of the oxygen-evolving complex subunit PsbP. Mutants defective in accumulation of PsbR have reduced amounts of subunits PsbP and PsbQ in PSII.
Synonyms:	PsbR, Photosystem II 10 kDa polypeptide, chloroplastic, photosystem II subunit R.
Immunogen:	KLH-conjugated synthetic peptide (15 aa from Central section) derived from <i>Arabidopsis thaliana</i> PsbR (AT1G79040).
Form:	Lyophilized
Quantity:	150 µg
Purification:	Immunogen affinity purified
Reconstitution:	Reconstitution with 150 µl of 0.01 M sterile PBS. "Note: please spin tube briefly prior to opening it to avoid any losses that might occur from lyophilized material adhering to the cap or sides of the tube".
Stability & Storage:	Use a manual defrost freezer and avoid repeated freeze-thaw cycles. 12 months from date of receipt, -20 to -70°C as supplied. 6 months, -20 to -70°C under sterile conditions after reconstitution. 1 month, 2 to 8°C under sterile conditions after reconstitution.
Shipping:	The product is shipped at 4°C. Upon receipt, store it immediately at the temperature recommended above.

Application Information

Recommended Dilution:	Western Blot (1:1000-1:2000) Note: Optimal dilutions/concentrations should be determined by the end user.
Expected / apparent MW:	15 / 11 kDa
Confirmed Reactivity:	<i>Arabidopsis thaliana</i>

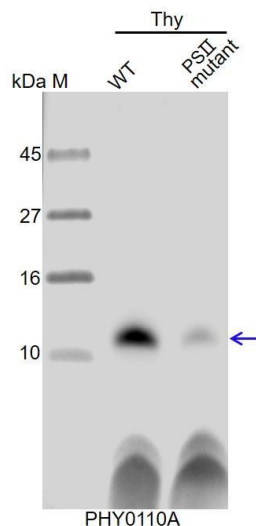
Research Use Only

Predicted Reactivity:

Among species analyzed, the sequence of the synthetic peptide used for immunization is 100% homologues with the sequence in *Brassica napus*, *Brassica rapa*, *Gossypium raimondii*, and 80-99% homologues with the sequence in *Populus trichocarpa*, *Glycine max*, *Cucumis sativus*, *Nicotiana tabacum*, *Solanum lycopersicum*, *Solanum tuberosum*, *Spinacia oleracea*, *Panicum virgatum*, *Sorghum bicolor*.

For more species homologues information, please contact tech support at tech@phytoab.com.

Application Example



Thy-WT: thylakoid membrane protein from WT of *Arabidopsis thaliana* leaf containing 2 µg of chlorophyll.

Thy-PS II mutant: thylakoid membrane protein from an Arabidopsis mutant with low accumulation of PS II containing 2 µg of chlorophyll.

Electrophoresis: Tricine-SDS-PAGE

Transfer: blotting to NC (nitrocellulose) membrane for 1 h.

Blocking: 5% skim milk at RT or 4°C for 1 h.

Primary antibody: 1:1000 dilution overnight at 4°C.

Secondary antibody: 1:10000 dilution using Goat Anti-Rabbit IgG H&L (HRP) (Cat# PHY6000).

Detection: using chemiluminescence substrate and image were captured with CCD camera.