

Anti-precursor D1 protein, C-terminal antibody

Catalog: PHY1224A

Product Information

Description:	Rabbit polyclonal antibody
Background:	The D1 protein of Photosystem II (PSII), encoded by the psbA genes, is a subunit of PSII reaction center and is an indispensable component of oxygenic photosynthesis. D1 is synthesized as a precursor (pD1) with a short C-terminal extension. After insertion into the thylakoid membrane, the C-terminal extension of pD1 will be cleaved off by CtpA.
Synonyms:	pD1, PHOTOSYSTEM II REACTION CENTER PROTEIN A, PSBA
Immunogen:	KLH-conjugated synthetic peptide (15 aa from C terminal section) derived from <i>Arabidopsis thaliana</i> pD1 (ATCG00020).
Form:	Lyophilized
Quantity:	150 µg
Purification:	Immunogen affinity purified
Reconstitution:	Reconstitution with 150 µl of 0.01 M sterile PBS. "Note: please spin tube briefly prior to opening it to avoid any losses that might occur from lyophilized material adhering to the cap or sides of the tube".
Stability &Storage:	Use a manual defrost freezer and avoid repeated freeze-thaw cycles. 12 months from date of receipt, -20 to -70°C as supplied. 6 months, -20 to -70°C under sterile conditions after reconstitution. 1 month, 2 to 8°C under sterile conditions after reconstitution.
Shipping:	The product is shipped at 4°C. Upon receipt, store it immediately at the temperature recommended above.

Application Information

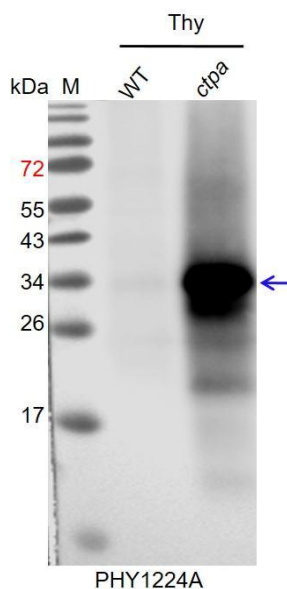
Recommended Dilution:	Western Blot (1:1000-1:2000) Note: Optimal dilutions/concentrations should be determined by the end user.
Expected / apparent MW:	39 / 33 kDa
Confirmed Reactivity:	<i>Arabidopsis thaliana</i>
Predicted Reactivity:	Among species analyzed, the sequence of the synthetic peptide used for

Research Use Only

immunization is 80-99% homologues with the sequence in *Solanum lycopersicum*, *Nicotiana tabacum*, *Vitis vinifera*, *Brassica napus*, *Gossypium raimondii*, *Solanum tuberosum*, *Populus trichocarpa*, *Medicago truncatula*, *Brassica rapa*, *Leymus chinensis*, *Cucumis sativus*, *Physcomitrium patens*, *Triticum aestivum*, *Hordeum vulgare* subsp. *spontaneum*, *Glycine max*, *Panicum virgatum*, *Setaria viridis* subsp. *pycnocoma*, *Oryza sativa Japonica Group*.

For more species homologues information, please contact tech support at tech@phytoab.com.

Application Example



Thy-WT: thylakoid membrane protein from *Arabidopsis thaliana* containing 0.25 µg of chlorophyll.

Thy-*ctp*a: thylakoid membrane protein from the *ctp*a mutant of *Arabidopsis* containing 0.25 µg of chlorophyll.

Electrophoresis: 15% SDS-PAGE

Transfer: blotting to NC (nitrocellulose) membrane for 1 h.

Blocking: 5% skim milk at RT or 4°C for 1 h.

Primary antibody: 1:1000 dilution overnight at 4°C.

Secondary antibody: 1:10000 dilution using Goat Anti-Rabbit IgG H&L (HRP) (Cat# PHY6000).

Detection: using chemiluminescence substrate and image were captured with CCD camera.