

# Anti-Translocase of chloroplast 159, chloroplastic antibody

Catalog: PHY1378A

## Product Information

<b>Description:</b>	Rabbit polyclonal antibody
<b>Background:</b>	TOC159 is an integral membrane GTPase that functions as a transit-sequence receptor required for the import of proteins necessary for chloroplast biogenesis. It located in the outer chloroplast membrane.
<b>Synonyms:</b>	TOC159, ATTOC159, PLASTID PROTEIN IMPORT 2, PPI2, TOC160, TOC86, TRANSLOCON AT THE OUTER ENVELOPE MEMBRANE OF CHLOROPLASTS 159, TRANSLOCON AT THE OUTER ENVELOPE MEMBRANE OF CHLOROPLASTS 160, TRANSLOCON AT THE OUTER ENVELOPE MEMBRANE OF CHLOROPLASTS 86
<b>Immunogen:</b>	KLH-conjugated synthetic peptide (15 aa from C terminal section) derived from <i>Arabidopsis thaliana</i> TOC159 (AT4G02510).
<b>Form:</b>	Lyophilized
<b>Quantity:</b>	150 µg
<b>Purification:</b>	Immunogen affinity purified
<b>Reconstitution:</b>	Reconstitution with 150 µl of 0.01 M sterile PBS. "Note: please spin tube briefly prior to opening it to avoid any losses that might occur from lyophilized material adhering to the cap or sides of the tube".
<b>Stability &amp; Storage:</b>	Use a manual defrost freezer and avoid repeated freeze-thaw cycles. 12 months from date of receipt, -20 to -70°C as supplied. 6 months, -20 to -70°C under sterile conditions after reconstitution. 1 month, 2 to 8°C under sterile conditions after reconstitution.
<b>Shipping:</b>	The product is shipped at 4°C. Upon receipt, store it immediately at the temperature recommended above.

## Application Information

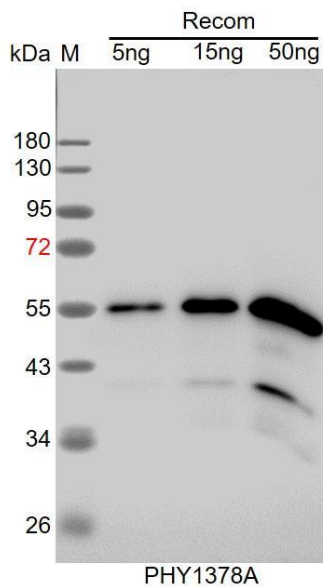
<b>Recommended Dilution:</b>	Western Blot (1:1000-1:2000) Note: Optimal dilutions/concentrations should be determined by the end user.
<b>Expected / apparent MW:</b>	161 kDa

Research Use Only

**Predicted Reactivity:**

Among species analyzed, the sequence of the synthetic peptide used for immunization is 80-99% homologues with the sequence in *Brassica napus*, *Brassica rapa*, *Nicotiana tabacum*, *Solanum tuberosum*, *Solanum lycopersicum*, *Populus trichocarpa*, *Triticum aestivum*, *Hordeum vulgare*, *Oryza sativa Japonica Group*.  
For more species homologues information, please contact tech support at [tech@phytoab.com](mailto:tech@phytoab.com).

**Application Example**



Recom: 5 ng, 15 ng and 50 ng recombinant protein containing the peptide for immunization and having a molecular mass of 55 kDa.

**Electrophoresis:** 12% SDS-PAGE

**Transfer:** blotting to NC (nitrocellulose) membrane for 1 h.

**Blocking:** 5% skim milk at RT or 4°C for 1 h.

**Primary antibody:** 1:1000 dilution overnight at 4°C.

**Secondary antibody:** 1:10000 dilution using Goat Anti-Rabbit IgG H&L (HRP) (Cat# PHY6000).

**Detection:** using chemiluminescence substrate and image were captured with CCD camera.