

Anti-Cysteine desulfurase 1, chloroplastic antibody

Catalog: PHY2865S

Product Information

Description:	Rabbit polyclonal antibody
Background:	Chloroplastic NifS-like protein that can catalyze the conversion of cysteine into alanine and elemental sulfur (S(0)) and of selenocysteine into alanine and elemental Se (Se(0)).
Synonyms:	CpNifS, ATCPNIFS, ATNFS2, ATSUFS, CHLOROPLASTIC NIFS-LIKE CYSTEINE DESULFURASE, CPNIFS, SUFS
Immunogen:	KLH-conjugated synthetic peptide (18 aa from N terminal section) derived from <i>Arabidopsis thaliana</i> CpNifS (AT1G08490).
Form:	Lyophilized
Quantity:	150 µg
Purification:	Serum Peptide affinity form antibody available upon request at info@phytoab.com .
Reconstitution:	Reconstitution with 150 µl of sterile water. "Note: please spin tube briefly prior to opening it to avoid any losses that might occur from lyophilized material adhering to the cap or sides of the tube".
Stability & Storage:	Use a manual defrost freezer and avoid repeated freeze-thaw cycles. 12 months from date of receipt, -20 to -70°C as supplied. 6 months, -20 to -70°C under sterile conditions after reconstitution. 1 month, 2 to 8°C under sterile conditions after reconstitution.
Shipping:	The product is shipped at 4°C. Upon receipt, store it immediately at the temperature recommended above.

Application Information

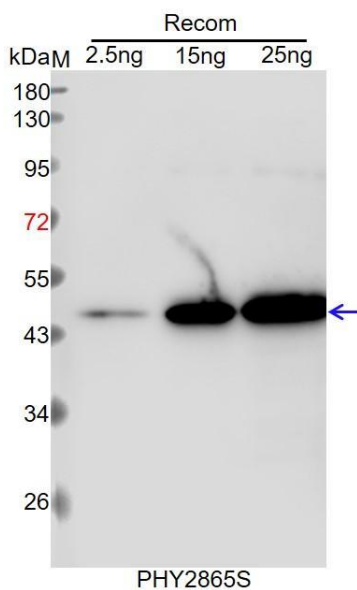
Recommended Dilution:	Western Blot (1:1000-1:2000) Note: Optimal dilutions/concentrations should be determined by the end user.
Expected / apparent MW:	50 kDa
Predicted Reactivity:	Among species analyzed, the sequence of the synthetic peptide used for immunization is 100% homologues with the sequence in <i>Solanum lycopersicum</i> , <i>Nicotiana tabacum</i> , <i>Solanum tuberosum</i> , <i>Brassica</i>

Research Use Only

napus, Medicago truncatula, Brassica rapa, Gossypium raimondii, 80-99% homologues with the sequence in Populus trichocarpa, Cucumis sativus, Glycine max, Spinacia oleracea, Vitis vinifera, Oryza sativa, Triticum aestivum, Hordeum vulgare, Setaria viridis, Panicum virgatum, Physcomitrium patens, Zea mays, Sorghum bicolor].

For more species homologues information, please contact tech support at tech@phytoab.com.

Application Example



Recom: 2.5 ng, 15 ng and 25 ng recombinant protein containing the peptide for immunization and having a molecular mass of 47 kDa.

Electrophoresis: 12% SDS-PAGE

Transfer: blotting to NC (nitrocellulose) membrane for 1 h.

Blocking: 5% skim milk at RT or 4°C for 1 h.

Primary antibody: 1:1000 dilution overnight at 4°C.

Secondary antibody: 1:10000 dilution using Goat Anti-Rabbit IgG H&L (HRP) (Cat# PHY6000).

Detection: using chemiluminescence substrate and image were captured with CCD camera.