

# Anti-PLASTID TRANSCRIPTIONALLY ACTIVE 9, C-terminal antibody

Catalog: PHY0396S

## Product Information

<b>Description:</b>	Rabbit polyclonal antibody
<b>Background:</b>	In chloroplasts, transcription of plastid genes is mediated by two types of RNA polymerase: plastid-encoded RNA polymerase (PEP) and nuclearencoded RNA polymerase (NEP). Transcription in plastids is also mediated by a number of nuclear-encoded factors in addition to PEP and NEP. In the insoluble RNA polymerase preparation samples, a total of 18 components named as pTACs (pTAC1 to pTAC18) were identified. pTAC9 (AT4G20010) is one of the components associated with PEP complex.
<b>Synonyms:</b>	pTAC9, ORGANELLAR SINGLE-STRANDED DNA BINDING PROTEIN 2, OSB2, PLASTID TRANSCRIPTIONALLY ACTIVE 9, PTAC9
<b>Immunogen:</b>	KLH-conjugated synthetic peptide (16 aa from C terminal section) derived from <i>Arabidopsis thaliana</i> pTAC9 (AT4G20010).
<b>Form:</b>	Lyophilized
<b>Quantity:</b>	150 µg
<b>Purification:</b>	Serum Peptide affinity form antibody available upon request at <a href="mailto:info@phytoab.com">info@phytoab.com</a> .
<b>Reconstitution:</b>	Reconstitution with 150 µl of sterile water. "Note: please spin tube briefly prior to opening it to avoid any losses that might occur from lyophilized material adhering to the cap or sides of the tube".
<b>Stability &amp; Storage:</b>	Use a manual defrost freezer and avoid repeated freeze-thaw cycles. 12 months from date of receipt, -20 to -70°C as supplied. 6 months, -20 to -70°C under sterile conditions after reconstitution. 1 month, 2 to 8°C under sterile conditions after reconstitution.
<b>Shipping:</b>	The product is shipped at 4°C. Upon receipt, store it immediately at the temperature recommended above.

## Application Information

<b>Recommended Dilution:</b>	Western Blot (1:1000-1:2000) Note: Optimal dilutions/concentrations should be determined by the
------------------------------	--

Research Use Only

end user.

**Expected / apparent MW:**

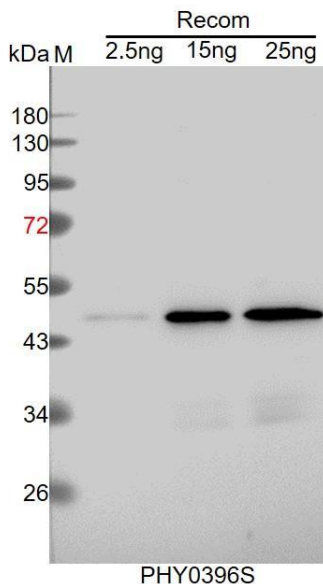
42 kDa

**Predicted Reactivity:**

Among species analyzed, the sequence of the synthetic peptide used for immunization is 100% homologues with the sequence in *Brassica rapa*, *Brassica napus* and 80-99% homologues with the sequence in *Glycine max*, *Hordeum vulgare*, *Medicago truncatula*.

For more species homologues information, please contact tech support at [tech@phytoab.com](mailto:tech@phytoab.com).

## Application Example



Recom: 2.5 ng, 15 ng and 25 ng recombinant protein containing the peptide for immunization and having a molecular mass of 50 kDa.

**Electrophoresis:** 12% SDS-PAGE

**Transfer:** blotting to NC (nitrocellulose) membrane for 1 h.

**Blocking:** 5% skim milk at RT or 4°C for 1 h.

**Primary antibody:** 1:1000 dilution overnight at 4°C.

**Secondary antibody:** 1:10000 dilution using Goat Anti-Rabbit IgG H&L (HRP) (Cat# PHY6000).

**Detection:** using chemiluminescence substrate and image were captured with CCD camera.