

Anti-Transcription factor FER-LIKE IRON DEFICIENCY-INDUCED TRANSCRIPTION FACTOR antibody

Catalog: PHY0940A

Product Information

Description:	Rabbit polyclonal antibody
Background:	FIT1 is a putative transcription factor that regulates iron uptake responses. It specifically regulates FRO2 at the level of mRNA accumulation and IRT1 at the level of protein accumulation.
Synonyms:	FIT1, FIT, ARABIDOPSIS FE-DEFICIENCY INDUCED TRANSCRIPTION FACTOR 1, ATBHLH029, ATBHLH29, ATFIT1, BASIC HELIX-LOOP-HELIX PROTEIN 29, BHLH029, FE-DEFICIENCY INDUCED TRANSCRIPTION FACTOR 1, FER-LIKE REGULATOR OF IRON UPTAKE, FRU.
Immunogen:	KLH-conjugated synthetic peptide (15 aa from C terminal section) derived from <i>Arabidopsis thaliana</i> FIT1 (AT2G28160).
Form:	Lyophilized
Quantity:	150 µg
Purification:	Immunogen affinity purified
Reconstitution:	Reconstitution with 150 µl of 0.01 M sterile PBS. "Note: please spin tube briefly prior to opening it to avoid any losses that might occur from lyophilized material adhering to the cap or sides of the tube".
Stability & Storage:	Use a manual defrost freezer and avoid repeated freeze-thaw cycles. 12 months from date of receipt, -20 to -70°C as supplied. 6 months, -20 to -70°C under sterile conditions after reconstitution. 1 month, 2 to 8°C under sterile conditions after reconstitution.
Shipping:	The product is shipped at 4°C. Upon receipt, store it immediately at the temperature recommended above.

Application Information

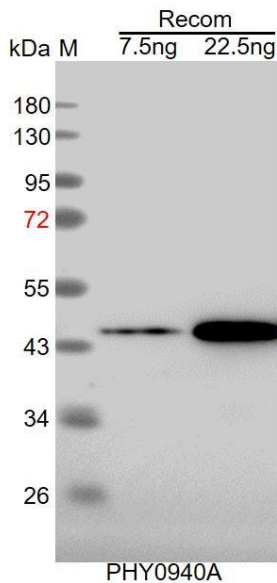
Recommended Dilution:	Western Blot (1:1000-1:2000) Note: Optimal dilutions/concentrations should be determined by the end user.
Expected / apparent MW:	36 kDa

Research Use Only

Predicted Reactivity:

For more species homologues information, please contact tech support at tech@phytoab.com.

Application Example



Recom: 7.5 ng and 22.5 ng recombinant protein containing the peptide for immunization and having a molecular mass of 45 kDa.

Electrophoresis: 12% SDS-PAGE

Transfer: blotting to NC (nitrocellulose) membrane for 1 h.

Blocking: 5% skim milk at RT or 4°C for 1 h.

Primary antibody: 1:1000 dilution overnight at 4°C.

Secondary antibody: 1:10000 dilution using Goat Anti-Rabbit IgG H&L (HRP) (Cat# PHY6000).

Detection: using chemiluminescence substrate and image were captured with CCD camera.