

Anti-Chaperonin 10 subunit, mitochondrial antibody

Catalog: PHY0376S

Product Information

Description:	Rabbit polyclonal antibody
Background:	Co-chaperonin complex is required for substrate encapsulation during assisting the folding of the unfolded protein with the chaperonin complex. Co-chaperonin also termed as GroES, Cpn10 and Hsp10. CPN10-II (AT1G23100) is a mitochondrial-localized chaperonin 10 protein.
Synonyms:	CPN10-II
Immunogen:	KLH-conjugated synthetic peptide (15 aa from C terminal section) derived from <i>Arabidopsis thaliana</i> CPN10-II (AT1G23100).
Form:	Lyophilized
Quantity:	150 µg
Purification:	Serum Peptide affinity form antibody available upon request at info@phytoab.com .
Reconstitution:	Reconstitution with 150 µl of sterile water. "Note: please spin tube briefly prior to opening it to avoid any losses that might occur from lyophilized material adhering to the cap or sides of the tube".
Stability & Storage:	Use a manual defrost freezer and avoid repeated freeze-thaw cycles. 12 months from date of receipt, -20 to -70°C as supplied. 6 months, -20 to -70°C under sterile conditions after reconstitution. 1 month, 2 to 8°C under sterile conditions after reconstitution.
Shipping:	The product is shipped at 4°C. Upon receipt, store it immediately at the temperature recommended above.

Application Information

Recommended Dilution:	Western Blot (1:1000-1:2000) Note: Optimal dilutions/concentrations should be determined by the end user.
Expected / apparent MW:	11 kDa
Confirmed Reactivity:	<i>Arabidopsis thaliana</i>
Predicted Reactivity:	Among species analyzed, the sequence of the synthetic peptide used

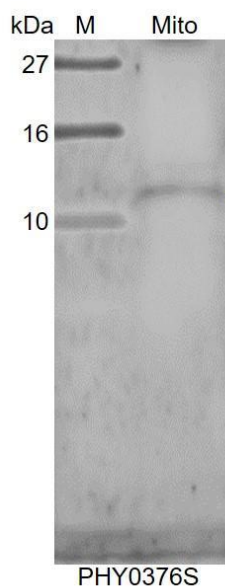
Research Use Only

for immunization is 100% homologues with the sequence in *Brassica napus*, *Brassica rapa*, and 80-99% homologues with the sequence in *Glycine max*, *Solanum tuberosum*, *Solanum lycopersicum*, *Nicotiana tabacum*, *Populus trichocarpa*.

The sequence of the synthetic peptide used for immunization is 87% homologues with the sequence in CPN10 (AT1G14980).

For more species homologues information, please contact tech support at tech@phytoab.com.

Application Example



Mito: 9 μ g mitochondria protein from *Arabidopsis thaliana*.

Electrophoresis: Tricine-SDS-PAGE

Transfer: blotting to NC (nitrocellulose) membrane for 1 h.

Blocking: 5% skim milk at RT or 4°C for 1 h.

Primary antibody: 1:1000 dilution overnight at 4°C.

Secondary antibody: 1:10000 dilution using Goat Anti-Rabbit IgG H&L (HRP) (Cat# PHY6000).

Detection: using chemiluminescence substrate and image were captured with CCD camera.