

Anti-Heat shock protein 21, chloroplastic antibody

Catalog: PHY3059A

Product Information

Description:	Rabbit polyclonal antibody
Background:	Encodes Hsp21, a chloroplast located small heat shock protein. A structure model of Hsp21, obtained by homology modeling, single-particle electron microscopy, and lysine-specific chemical crosslinking, shows that the Hsp21 subunits are arranged in two hexameric discs, rotated by 25 degree in relation to each other.
Synonyms:	HSP21, HEAT SHOCK PROTEIN 21
Immunogen:	KLH-conjugated synthetic peptide (18 aa from Central section) derived from <i>Arabidopsis thaliana</i> HSP21 (AT4G27670).
Form:	Lyophilized
Quantity:	150 µg
Purification:	Immunogen affinity purified
Reconstitution:	Reconstitution with 150 µl of 0.01 M sterile PBS. "Note: please spin tube briefly prior to opening it to avoid any losses that might occur from lyophilized material adhering to the cap or sides of the tube".
Stability & Storage:	Use a manual defrost freezer and avoid repeated freeze-thaw cycles. 12 months from date of receipt, -20 to -70°C as supplied. 6 months, -20 to -70°C under sterile conditions after reconstitution. 1 month, 2 to 8°C under sterile conditions after reconstitution.
Shipping:	The product is shipped at 4°C. Upon receipt, store it immediately at the temperature recommended above.

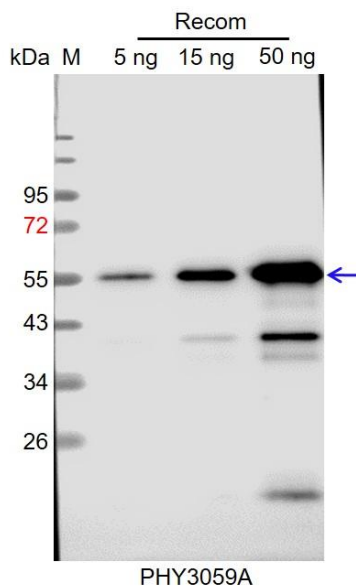
Application Information

Recommended Dilution:	Western Blot (1:1000-1:2000) Note: Optimal dilutions/concentrations should be determined by the end user.
Expected / apparent MW:	25 kDa
Predicted Reactivity:	Among species analyzed, the sequence of the synthetic peptide used for immunization is 100% homologues with the sequence in <i>Populus trichocarpa</i> , <i>Brassica napus</i> , <i>Brassica rapa</i> , and 80-99%

Research Use Only

homologues with the sequence in *Oryza sativa*, *Sorghum bicolor*, *Triticum aestivum*, *Setaria viridis*, *Zea mays*, *Panicum virgatum*, *Nicotiana tabacum*, *Hordeum vulgare*, *Solanum lycopersicum*, *Solanum tuberosum*, *Gossypium raimondii*, *Cucumis sativus*, *Medicago truncatula*, *Vitis vinifera*, *Spinacia oleracea*, *Glycine max*. For more species homologues information, please contact tech support at tech@phytoab.com.

Application Example



Recom: 5 ng, 15 ng and 50 ng recombinant protein containing the peptide for immunization and having a molecular mass of 55 kDa.

Electrophoresis: 12% SDS-PAGE

Transfer: blotting to NC (nitrocellulose) membrane for 1 h.

Blocking: 5% skim milk at RT or 4°C for 1 h.

Primary antibody: 1:1000 dilution overnight at 4°C.

Secondary antibody: 1:10000 dilution using Goat Anti-Rabbit IgG H&L (HRP) (Cat# PHY6000).

Detection: using chemiluminescence substrate and image were captured with CCD camera.