

# Anti-Auxin efflux carrier component 2 antibody

Catalog: PHY3489S

## Product Information

<b>Description:</b>	Rabbit polyclonal antibody
<b>Background:</b>	PIN2 (AT5g57090) is a component of the auxin efflux carrier and is involved in the root-specific auxin transport as well as mediates the root gravitropism. It is very likely that PIN2 plays a role in the translocation of auxin towards the elongation zone.
<b>Synonyms:</b>	PIN2, AGR, AGR1, AGRAVITROPIC ROOT, AGRAVITROPIC ROOT 1, ARABIDOPSIS THALIANA PIN-FORMED 2, ATPIN2, EIR1, ETHYLENE INSENSITIVE ROOT 1, MM31, PIN-FORMED 2, WAV6, WAVY ROOTS 6
<b>Immunogen:</b>	KLH-conjugated synthetic peptide (19 aa from Central section) derived from <i>Arabidopsis thaliana</i> PIN2 (AT5G57090).
<b>Form:</b>	Lyophilized
<b>Quantity:</b>	150 µg
<b>Purification:</b>	Serum Peptide affinity form antibody available upon request at <a href="mailto:info@phytoab.com">info@phytoab.com</a> .
<b>Reconstitution:</b>	Reconstitution with 150µl of sterile water. "Note: please spin tube briefly prior to opening it to avoid any losses that might occur from lyophilized material adhering to the cap or sides of the tube".
<b>Stability &amp; Storage:</b>	Use a manual defrost freezer and avoid repeated freeze-thaw cycles. 12 months from date of receipt, -20 to -70°C as supplied. 6 months, -20 to -70°C under sterile conditions after reconstitution. 1 month, 2 to 8°C under sterile conditions after reconstitution.
<b>Shipping:</b>	The product is shipped at 4°C. Upon receipt, store it immediately at the temperature recommended above.

## Application Information

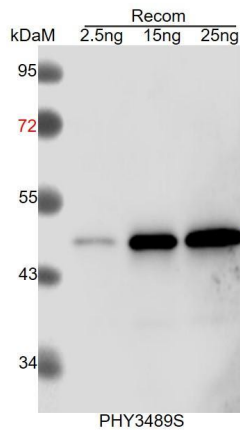
<b>Recommended Dilution:</b>	Western Blot (1:1000-1:2000) Note: Optimal dilutions/concentrations should be determined by the end user.
<b>Expected / apparent MW:</b>	69 kDa

Research Use Only

### Predicted Reactivity:

For more species homologues information, please contact tech support at [tech@phytoab.com](mailto:tech@phytoab.com).

## Application Example



Recom: 2.5 ng, 15 ng and 25 ng recombinant protein containing the peptide for immunization and having a molecular mass of 48 kDa.

**Electrophoresis:** 12% SDS-PAGE

**Transfer:** blotting to NC (nitrocellulose) membrane for 1 h.

**Blocking:** 5% skim milk at RT or 4°C for 1 h.

**Primary antibody:** 1:1000 dilution overnight at 4°C.

**Secondary antibody:** 1:10000 dilution using Goat Anti-Rabbit IgG H&L (HRP) (Cat# PHY6000).

**Detection:** using chemiluminescence substrate and image were captured with CCD camera.