

Anti-PsaC subunit of photosystem I antibody

Catalog: PHY3871S

Product Information

Description:	Rabbit polyclonal antibody
Background:	Photosystem I (PSI) is a multisubunit complex that catalyses the final stage of the light reactions in chloroplasts. PsaC (ATCG01060) is a PSI subunit exposed to the stromal side of PSI and provides the ligands for two [4Fe-4S] clusters, FA and FB.
Synonyms:	PsaC, PSI-C
Immunogen:	Recombinant protein of PsaC (1-81aa) derived from <i>Arabidopsis thaliana</i> ATCG01060.
Form:	Lyophilized
Quantity:	150 µg
Purification:	Serum Peptide affinity form antibody available upon request at info@phytoab.com .
Reconstitution:	Reconstitution with 150 µl of sterile water. "Note: please spin tube briefly prior to opening it to avoid any losses that might occur from lyophilized material adhering to the cap or sides of the tube".
Stability & Storage:	Use a manual defrost freezer and avoid repeated freeze-thaw cycles. 12 months from date of receipt, -20 to -70°C as supplied. 6 months, -20 to -70°C under sterile conditions after reconstitution. 1 month, 2 to 8°C under sterile conditions after reconstitution.
Shipping:	The product is shipped at 4°C. Upon receipt, store it immediately at the temperature recommended above.

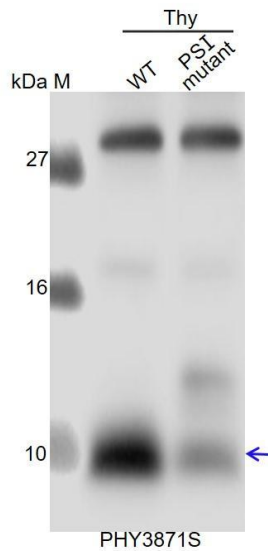
Application Information

Recommended Dilution:	Western Blot (1:1000-1:2000) Note: Optimal dilutions/concentrations should be determined by the end user.
Expected / apparent MW:	9 kDa
Confirmed Reactivity:	<i>Arabidopsis thaliana</i>
Predicted Reactivity:	For more species homologues information, please contact tech

Research Use Only

support at tech@phytoab.com.

Application Example



Thy-WT: thylakoid membrane protein from *Arabidopsis thaliana* leaf containing 2.5 µg of chlorophyll.

Thy-PSI mutant: thylakoid membrane protein from PSI mutant of *Arabidopsis thaliana* containing 2.5 µg of chlorophyll.

Electrophoresis: Tricine-SDS-PAGE

Transfer: blotting to NC (nitrocellulose) membrane for 1 h.

Blocking: 5% skim milk at RT or 4°C for 1 h.

Primary antibody: 1:2000 dilution overnight at 4°C.

Secondary antibody: 1:10000 dilution using Goat Anti-Rabbit IgG H&L (HRP) (Cat# PHY6000).

Detection: using chemiluminescence substrate and image were captured with CCD camera.