

Anti-PsbO subunit of oxygen evolving complex of Photosystem II, C-terminal antibody

Catalog: PHY2255A

Product Information

Description:	Rabbit polyclonal antibody
Background:	PsbO is an extrinsic subunit of photosystem II, which has been proposed to play a central role in stabilization of the catalytic manganese cluster. In <i>Arabidopsis thaliana</i> , the PsbO proteins are encoded by two genes: <i>psbO1</i> (AT5G66570) and <i>psbO2</i> (AT3G50820). PsbO1 is the major isoform in <i>Arabidopsis</i> .
Synonyms:	PsbO, OEE1, 33 kDa subunit of oxygen evolving system of photosystem II, 33 kDa thylakoid membrane protein, Manganese-stabilizing protein 1, MSP-1, OEC 33 kDa subunit, 33 kDa of the oxygen evolving complex (OEC) of PSII, Oxygen-evolving enhancer protein 1, chloroplastic
Immunogen:	KLH-conjugated synthetic peptide (16 aa from C-terminal) derived from <i>Arabidopsis thaliana</i> PsbO-1 (AT5G66570) and PsbO-2 (AT3G50820).
Form:	Lyophilized
Quantity:	150 µg
Purification:	Immunogen affinity purified
Reconstitution:	Reconstitution with 150 µl of 0.01 M sterile PBS. "Note: please spin tube briefly prior to opening it to avoid any losses that might occur from lyophilized material adhering to the cap or sides of the tube".
Stability & Storage:	Use a manual defrost freezer and avoid repeated freeze-thaw cycles. 12 months from date of receipt, -20 to -70°C as supplied. 6 months, -20 to -70°C under sterile conditions after reconstitution. 1 month, 2 to 8°C under sterile conditions after reconstitution.
Shipping:	The product is shipped at 4°C. Upon receipt, store it immediately at the temperature recommended above.

Application Information

Recommended Dilution:	Western Blot (1:1000-1:2000) Note: Optimal dilutions/concentrations should be determined by the end user.
------------------------------	--

Research Use Only

Expected / apparent MW: 35 kDa

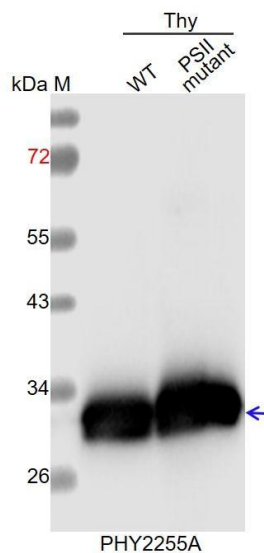
Confirmed Reactivity: *Arabidopsis thaliana*

Predicted Reactivity: Among species analyzed, the sequence of the synthetic peptide used for immunization is 100% homologues with the sequence in *Brassica napus*, *Brassica rapa*, and 80-99% homologues with the sequence in *Spinacia oleracea*, *Nicotiana tabacum*, *Vitis vinifera*, *Solanum lycopersicum*, *Solanum tuberosum*, *Oryza sativa*, *Gossypium raimondii*, *Populus trichocarpa*, *Glycine max*, *Cucumis sativus*, *Medicago truncatula*, *Zea mays*, *Setaria viridis*, *Panicum virgatum*, *Sorghum bicolor*, *Triticum aestivum*, *Hordeum vulgare*.

The sequence of the synthetic peptide used for immunization is 81% (13/16) homologues with the sequence in AT4G37230.

For more species homologues information, please contact tech support at tech@phytoab.com.

Application Example



Thy-WT: thylakoid membrane protein from WT of *Arabidopsis thaliana* containing 0.5 µg of chlorophyll.

Thy-PSII mutant: thylakoid membrane protein from an *Arabidopsis* mutant with low accumulation of PSI containing 0.5 µg of chlorophyll.

Electrophoresis: 15% SDS-PAGE

Transfer: blotting to NC (nitrocellulose) membrane for 1 h.

Blocking: 5% skim milk at RT or 4°C for 1 h.

Primary antibody: 1:1000 dilution overnight at 4°C.

Secondary antibody: 1:10000 dilution using Goat Anti-Rabbit IgG H&L (HRP) (Cat# PHY6000).

Detection: using chemiluminescence substrate and image were captured with CCD camera.