

Anti-Cellulose synthase A catalytic subunit 1 [UDP-forming] antibody

Catalog: PHY0798S

Product Information

Description:	Rabbit polyclonal antibody
Background:	CESA1 mutants have cellulose defect in the primary cell wall. Multiple lines of evidence suggest that CESA1, along with CESA3 (AT5G05170) and CESA6 (AT5G64740) are present in the same plasma membrane complex for cellulose biosynthesis. The remaining CESAs are included CESA2 (AT4G39350), CESA4 (AT5G44030), CESA5 (AT5G09870), CESA7 (AT5G17420), CESA8 (AT4G18780), CESA9 (AT2G21770) and CESA10 (AT2G25540).
Synonyms:	CESA1, ANISOTROPY1, ANY1, ATCESA1, CELLULOSE SYNTHASE 1, RADIALY SWOLLEN 1, RSW1
Immunogen:	KLH-conjugated synthetic peptide (23 aa from N terminal section) derived from <i>Arabidopsis thaliana</i> CESA1 (AT4G32410).
Form:	Lyophilized
Quantity:	150 µg
Purification:	Serum
Reconstitution:	Peptide affinity form antibody available upon request at info@phytoab.com . Reconstitution with 150 µl of sterile water. "Note: please spin tube briefly prior to opening it to avoid any losses that might occur from lyophilized material adhering to the cap or sides of the tube".
Stability & Storage:	Use a manual defrost freezer and avoid repeated freeze-thaw cycles. 12 months from date of receipt, -20 to -70°C as supplied. 6 months, -20 to -70°C under sterile conditions after reconstitution. 1 month, 2 to 8°C under sterile conditions after reconstitution.
Shipping:	The product is shipped at 4°C. Upon receipt, store it immediately at the temperature recommended above.

Application Information

Recommended Dilution:	Western Blot (1:1000-1:2000) Note: Optimal dilutions/concentrations should be determined by the end user.
------------------------------	--

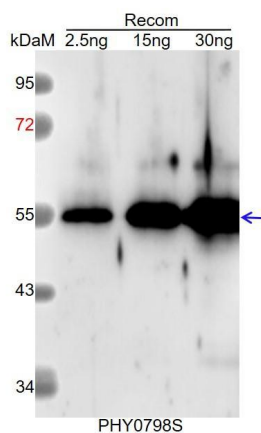
Research Use Only

Expected / apparent MW: 122 kDa

Predicted Reactivity: Among species analyzed, the sequence of the synthetic peptide used for immunization is 80-99% homologues with the sequence in *Brassica rapa*, *Brassica napus*.

For more species homologues information, please contact tech support at tech@phytoab.com.

Application Example



Recom: 2.5 ng, 15 ng and 30 ng recombinant protein containing the peptide for immunization and having a molecular mass of 55 kDa.

Electrophoresis: 12% SDS-PAGE

Transfer: blotting to NC (nitrocellulose) membrane for 1 h.

Blocking: 5% skim milk at RT or 4°C for 1 h.

Primary antibody: 1:1000 dilution overnight at 4°C.

Secondary antibody: 1:10000 dilution using Goat Anti-Rabbit IgG H&L (HRP) (Cat# PHY6000).

Detection: using chemiluminescence substrate and image were captured with CCD camera.