

Anti-NAD(P)H-quinone oxidoreductase subunit 2, chloroplastic, N-terminal antibody

Catalog: PHY3145S

Product Information

| | |
|---------------------------------|---|
| Description: | Rabbit polyclonal antibody |
| Background: | NDH shuttles electrons from NAD(P)H: plastoquinone, via FMN and iron-sulfur (Fe-S) centers, to quinones in the photosynthetic chain and possibly in a chloroplast respiratory chain. It is the immediate electron acceptor for the enzyme in this species is believed to be plastoquinone. And it couples the redox reaction to proton translocation, and thus conserves the redox energy in a proton gradient. |
| Synonyms: | NDHB, NAD(P)H dehydrogenase, subunit 2 |
| Immunogen: | KLH-conjugated synthetic peptide (16 aa from N terminal section) derived from <i>Arabidopsis thaliana</i> NDHB.1 (ATCG00890) and NDHB.2 (ATCG01250). |
| Form: | Lyophilized |
| Quantity: | 150 µg |
| Purification: | Serum Peptide affinity form antibody available upon request at info@phytoab.com . |
| Reconstitution: | Reconstitution with 150 µl of sterile water. "Note: please spin tube briefly prior to opening it to avoid any losses that might occur from lyophilized material adhering to the cap or sides of the tube". |
| Stability & Storage: | Use a manual defrost freezer and avoid repeated freeze-thaw cycles. 12 months from date of receipt, -20 to -70°C as supplied. 6 months, -20 to -70°C under sterile conditions after reconstitution. 1 month, 2 to 8°C under sterile conditions after reconstitution. |
| Shipping: | The product is shipped at 4°C. Upon receipt, store it immediately at the temperature recommended above. |

Application Information

| | |
|--------------------------------|--|
| Recommended Dilution: | Western Blot (1:1000-1:2000) Note: Optimal dilutions/concentrations should be determined by the end user. |
| Expected / apparent MW: | 42 kDa |

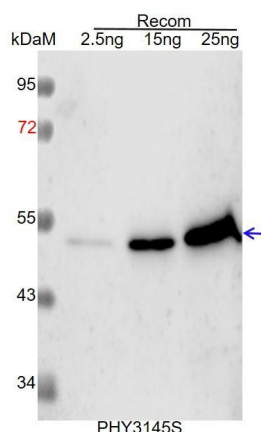
Research Use Only

Predicted Reactivity:

Among species analyzed, the sequence of the synthetic peptide used for immunization is 80-99% homologues with the sequence in *Medicago truncatula*, *Brassica rapa*, *Brassica napus*, *Solanum lycopersicum*, *Nicotiana tabacum*, *Solanum tuberosum*, *Oryza sativa*, *Triticum aestivum*, *Hordeum vulgare*, *Leymus chinensis*, *Zea mays*, *Setaria viridis*, *Physcomitrium patens*, *Panicum virgatum*, *Cucumis sativus*, *Vitis vinifera*, *Populus trichocarpa*, *Spinacia oleracea*, *Gossypium raimondii*, *Glycine max*.

For more species homologues information, please contact tech support at tech@phytoab.com.

Application Example



Recom: 2.5 ng, 15 ng and 25 ng recombinant protein containing the peptide for immunization and having a molecular mass of 52 kDa.

Electrophoresis: 12% SDS-PAGE

Transfer: blotting to NC (nitrocellulose) membrane for 1 h.

Blocking: 5% skim milk at RT or 4°C for 1 h.

Primary antibody: 1:1000 dilution overnight at 4°C.

Secondary antibody: 1:10000 dilution using Goat Anti-Rabbit IgG H&L (HRP) (Cat# PHY6000).

Detection: using chemiluminescence substrate and image were captured with CCD camera.