

Anti-DELLA protein RGL2 antibody

Catalog: PHY3626S

Product Information

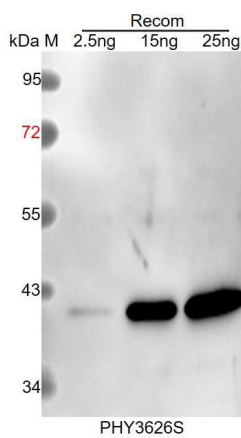
Description:	Rabbit polyclonal antibody
Background:	RGL2 is a DELLA protein, a member of the GRAS superfamily of putative transcription factors. DELLA proteins restrain the cell proliferation and expansion that drives plant growth. Negative regulator of the response to GA in controlling seed germination. GA triggers the degradation of RGL2 protein in a process blocked by both proteasome inhibitors and serine/threonine phosphatase inhibitors. The protein undergoes degradation in response to GA via the 26S proteasome. RGL2 may be involved in reducing ROS accumulation in response to stress by up-regulating the transcription of superoxide dismutases. Rapidly degraded in response to GA. Regulates GA-promoted seed germination. Involved in flower and fruit development.
Synonyms:	RGL2, RGA-LIKE 2
Immunogen:	KLH-conjugated synthetic peptide (15 aa from Central section) derived from <i>Arabidopsis thaliana</i> RGL2 (AT3G03450).
Form:	Lyophilized
Quantity:	150 µg
Purification:	Serum Peptide affinity form antibody available upon request at info@phytoab.com .
Reconstitution:	Reconstitution with 150µl of sterile water. "Note: please spin tube briefly prior to opening it to avoid any losses that might occur from lyophilized material adhering to the cap or sides of the tube".
Stability & Storage:	Use a manual defrost freezer and avoid repeated freeze-thaw cycles. 12 months from date of receipt, -20 to -70°C as supplied. 6 months, -20 to -70°C under sterile conditions after reconstitution. 1 month, 2 to 8°C under sterile conditions after reconstitution.
Shipping:	The product is shipped at 4°C. Upon receipt, store it immediately at the temperature recommended above.

Application Information

Research Use Only

Recommended Dilution:	Western Blot (1:1000-1:2000)
	Note: Optimal dilutions/concentrations should be determined by the end user.
Expected / apparent MW:	60 kDa
Predicted Reactivity:	For more species homologues information, please contact tech support at tech@phytoab.com .

Application Example



Recom: 2.5 ng, 15 ng and 25 ng recombinant protein containing the peptide for immunization and having a molecular mass of 41 kDa.

Electrophoresis: 12% SDS-PAGE

Transfer: blotting to NC (nitrocellulose) membrane for 1 h.

Blocking: 5% skim milk at RT or 4°C for 1 h.

Primary antibody: 1:1000 dilution overnight at 4°C.

Secondary antibody: 1:10000 dilution using Goat Anti-Rabbit IgG H&L (HRP) (Cat# PHY6000).

Detection: using chemiluminescence substrate and image were captured with CCD camera.