

Anti-Glutathione reductase, C-terminal antibody

Catalog: PHY0134S

Product Information

| | |
|------------------------|---|
| Description: | Rabbit polyclonal antibody |
| Background: | Glutathione reductase (GR; EC 1.6.4.2) is a ubiquitous flavoenzyme that converts oxidized glutathione (GSSG) to the reduced form (GSH), with concomitant oxidation of NADPH. Glutathione reductase has been mainly localized in chloroplasts, mitochondria and the cytosol, glutathione reductase is important component of the cell's scavenging system for reactive oxygen compounds in plants. |
| Synonyms: | GR, ATGR2, EMB2360, GLUTATHIONE REDUCTASE |
| Immunogen: | KLH-conjugated synthetic peptide (15 aa from C terminal section) derived from <i>Arabidopsis thaliana</i> GR (AT3G54660). |
| Form: | Lyophilized |
| Quantity: | 150 µg |
| Purification: | Serum Peptide affinity form antibody available upon request at info@phytoab.com . |
| Reconstitution: | Reconstitution with 150 µl of sterile water. "Note: please spin tube briefly prior to opening it to avoid any losses that might occur from lyophilized material adhering to the cap or sides of the tube". |
| Stability & | Use a manual defrost freezer and avoid repeated freeze-thaw cycles. |
| Storage: | 12 months from date of receipt, -20 to -70°C as supplied. 6 months, -20 to -70°C under sterile conditions after reconstitution. 1 month, 2 to 8°C under sterile conditions after reconstitution. |
| Shipping: | The product is shipped at 4°C. Upon receipt, store it immediately at the temperature recommended above. |

Application Information

| | |
|--------------------------------|--|
| Recommended Dilution: | Western Blot (1:1000-1:2000) Note: Optimal dilutions/concentrations should be determined by the end user. |
| Expected / apparent MW: | 61 kDa |

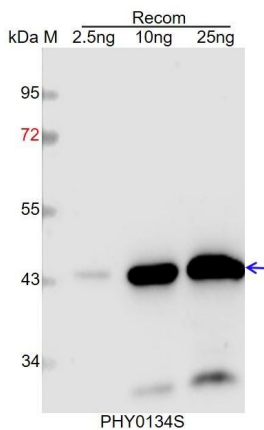
Research Use Only

Predicted Reactivity:

Among species analyzed, the sequence of the synthetic peptide used for immunization is 80-99% homologues with the sequence in *Brassica rapa*, *Brassica napus*.

For more species homologues information, please contact tech support at tech@phytoab.com.

Application Example



Recom: 2.5 ng, 10 ng and 25 ng recombinant protein containing the peptide for immunization and having a molecular mass of 44 kDa.

Electrophoresis: 12% SDS-PAGE

Transfer: blotting to NC (nitrocellulose) membrane for 1 h.

Blocking: 5% skim milk at RT or 4°C for 1 h.

Primary antibody: 1:1000 dilution overnight at 4°C.

Secondary antibody: 1:10000 dilution using Goat Anti-Rabbit IgG H&L (HRP) (Cat# PHY6000).

Detection: using chemiluminescence substrate and image were captured with CCD camera.