

Anti-Cyclophilin 38 antibody

Catalog: PHY2573S

Product Information

Description:	Rabbit polyclonal antibody
Background:	CYP38 (AT3G01480) is a thylakoid lumen protein comprising the immunophilin domain and the phosphatase inhibitor module. It may guides D1 biogenesis during PSII assembly.
Synonyms:	CYP38, ARABIDOPSIS CYCLOPHILIN 38, ATCYP38, CYCLOPHILIN 38
Immunogen:	KLH-conjugated synthetic peptide (16 aa from N terminal section) derived from <i>Arabidopsis thaliana</i> CYP38 (AT3G01480).
Form:	Lyophilized
Quantity:	150 µg
Purification:	Serum
Reconstitution:	Peptide affinity form antibody available upon request at info@phytoab.com . Reconstitution with 150 µl of sterile water. "Note: please spin tube briefly prior to opening it to avoid any losses that might occur from lyophilized material adhering to the cap or sides of the tube".
Stability & Storage:	Use a manual defrost freezer and avoid repeated freeze-thaw cycles. 12 months from date of receipt, -20 to -70°C as supplied. 6 months, -20 to -70°C under sterile conditions after reconstitution. 1 month, 2 to 8°C under sterile conditions after reconstitution.
Shipping:	The product is shipped at 4°C. Upon receipt, store it immediately at the temperature recommended above.

Application Information

Recommended Dilution:	Western Blot (1:1000-1:5000) Note: Optimal dilutions/concentrations should be determined by the end user.
Expected / apparent MW:	48 / 39 kDa
Confirmed Reactivity:	<i>Arabidopsis thaliana</i>
Predicted Reactivity:	Among species analyzed, the sequence of the synthetic peptide used for immunization is 100% homologues with the sequence in <i>Solanum</i>

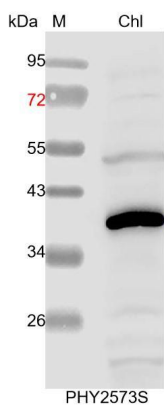
Research Use Only

tuberosum, *Populus trichocarpa*, *Medicago truncatula*, *Panicum virgatum*, *Solanum lycopersicum*, *Triticum aestivum*, *Brassica napus*, *Brassica rapa*, *Sorghum bicolor*, *Setaria viridis*, *Zea mays*, *Hordeum vulgare*, *Nicotiana tabacum*, and 80-99% homologues with the sequence in *Gossypium raimondii*, *Glycine max*, *Spinacia oleracea*, *Cucumis sativus*, *Oryza sativa*.

For more species homologues information, please contact tech support at tech@phytoab.com.

Application Example

Example1:



Chl: 4 μ l total chloroplast protein from *Arabidopsis thaliana*.

Electrophoresis: 15% SDS-PAGE

Transfer: blotting to NC (nitrocellulose) membrane for 1 h.

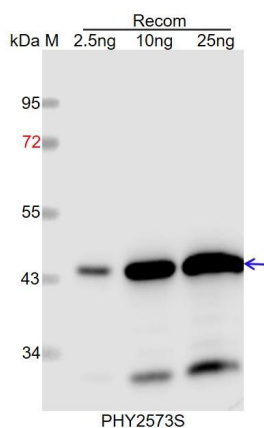
Blocking: 5% skim milk at RT or 4°C for 1 h.

Primary antibody: 1:5000 dilution overnight at 4°C.

Secondary antibody: 1:10000 dilution using Goat Anti-Rabbit IgG H&L(HRP) (Cat# PHY6000).

Detection: using chemiluminescence substrate and image were captured with CCD camera.

Example2:



Recom: 2.5 ng, 10 ng and 25 ng recombinant protein containing the peptide for immunization and having a molecular mass of 44 kDa.

Electrophoresis: 12% SDS-PAGE

Transfer: blotting to NC (nitrocellulose) membrane for 1 h.

Blocking: 5% skim milk at RT or 4°C for 1 h.

Primary antibody: 1:1000 dilution overnight at 4°C.

Secondary antibody: 1:10000 dilution using Goat Anti-Rabbit IgG H&L (HRP) (Cat# PHY6000).

Detection: using chemiluminescence substrate and image were captured with CCD camera.