

Anti-Double-stranded RNA-binding protein 1 antibody

Catalog: PHY3838S

Product Information

Description:	Rabbit polyclonal antibody
Background:	Hyponastic leave 1 (HYL1, AT1G09700) is a double-stranded RNA-binding protein with 419 amino acids. HYL1 contains two double-stranded RNA (dsRNA) binding motifs, a nuclear localization motif, and a C-terminal repeat structure suggestive of a protein-protein interaction domain. HYL1 forms a complex with DICER-LIKE1 (DCL1, AT1G01040) and SERRATE (SE, AT2G27100) to process primary miRNA (pri-miRNA) into mature miRNA. It has been reported that HYL1 regulates the phase transition, establishment of stamen, and the adaxial–abaxial identity of leaf in Arabidopsis by controlling the biogenesis of different miRNA families.
Synonyms:	HYL1, ATDRB1, DRB1, DSRNA-BINDING PROTEIN 1, HYPONASTIC LEAVES 1
Immunogen:	KLH-conjugated synthetic peptide (15 aa from Central section) derived from <i>Arabidopsis thaliana</i> HYL1 (AT1G09700).
Form:	Lyophilized
Quantity:	150 µg
Purification:	Serum Peptide affinity form antibody available upon request at info@phytoab.com .
Reconstitution:	Reconstitution with 150µl of sterile water. "Note: please spin tube briefly prior to opening it to avoid any losses that might occur from lyophilized material adhering to the cap or sides of the tube".
Stability & Storage:	Use a manual defrost freezer and avoid repeated freeze-thaw cycles. 12 months from date of receipt, -20 to -70°C as supplied. 6 months, -20 to -70°C under sterile conditions after reconstitution. 1 month, 2 to 8°C under sterile conditions after reconstitution.
Shipping:	The product is shipped at 4°C. Upon receipt, store it immediately at the temperature recommended above.

Application Information

Recommended Dilution:	Western Blot (1:1000-1:2000)
------------------------------	------------------------------

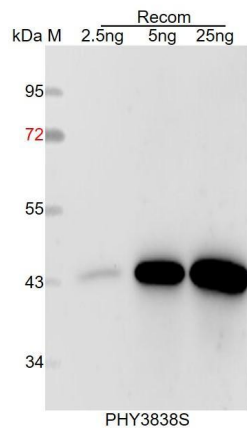
Research Use Only

Note: Optimal dilutions/concentrations should be determined by the end user.

Expected / apparent MW: 46 kDa

Predicted Reactivity: For more species homologues information, please contact tech support at tech@phytoab.com.

Application Example



Recom: 2.5 ng, 10 ng and 25 ng recombinant protein containing the peptide for immunization and having a molecular mass of 44 kDa.

Electrophoresis: 12% SDS-PAGE

Transfer: blotting to NC (nitrocellulose) membrane for 1 h.

Blocking: 5% skim milk at RT or 4°C for 1 h.

Primary antibody: 1:1000 dilution overnight at 4°C.

Secondary antibody: 1:10000 dilution using Goat Anti-Rabbit IgG H&L (HRP) (Cat# PHY6000).

Detection: using chemiluminescence substrate and image were captured with CCD camera.