

Anti-Clathrin adaptor complexes medium subunit family protein antibody

Catalog: PHY0706A

Product Information

Description:	Rabbit polyclonal antibody
Background:	AP2 μ is one of a subunit of the adaptor protein complex 2 (AP-2). The AP-2 complex has been generally thought to function as a heterotetramer, consisting of two large (a/A and b/B) (AT4G11380), one medium (m/M) (AT5G46630), and one small (s/S) (AT1G47830) subunit(s). AP-2 is involved in clathrin-dependent endocytosis in which cargo proteins are incorporated into vesicles surrounded by clathrin (clathrin-coated vesicles, CCVs) which are destined for fusion with the early endosome.
Synonyms:	AP2 μ , ADAPTOR PROTEIN-2 MU-ADAPTIN, AP2M
Immunogen:	KLH-conjugated synthetic peptide (15 aa from Central section) derived from <i>Arabidopsis thaliana</i> AP2 μ (AT5G46630).
Form:	Lyophilized
Quantity:	150 μ g
Purification:	Immunogen affinity purified
Reconstitution:	Reconstitution with 150 μ l of 0.01 M sterile PBS. "Note: please spin tube briefly prior to opening it to avoid any losses that might occur from lyophilized material adhering to the cap or sides of the tube".
Stability & Storage:	Use a manual defrost freezer and avoid repeated freeze-thaw cycles. 12 months from date of receipt, -20 to -70°C as supplied. 6 months, -20 to -70°C under sterile conditions after reconstitution. 1 month, 2 to 8°C under sterile conditions after reconstitution.
Shipping:	The product is shipped at 4°C. Upon receipt, store it immediately at the temperature recommended above.

Application Information

Recommended Dilution:	Western Blot (1:1000-1:2000) Note: Optimal dilutions/concentrations should be determined by the end user.
Expected / apparent MW:	49 kDa

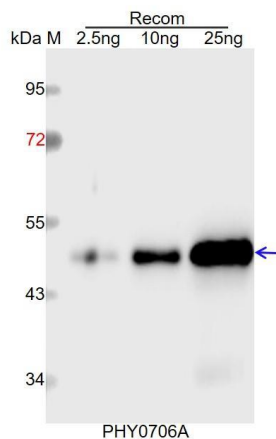
Research Use Only

Predicted Reactivity:

Among species analyzed, the sequence of the synthetic peptide used for immunization is 100% homologues with the sequence in *Zea mays*, *Cucumis sativus*, *Brassica napus*, *Brassica rapa*, *Glycine max*, *Panicum virgatum*, *Solanum tuberosum*, *Nicotiana tabacum*, *Solanum lycopersicum*, *Populus trichocarpa*, *Setaria viridis*, *Gossypium raimondii*, *Triticum aestivum*, *Vitis vinifera*, *Oryza sativa Japonica Group*, *Medicago truncatula*, *Spinacia oleracea*, *Sorghum bicolor*, and 80-99% homologues with the sequence in *Physcomitrium patens*.

For more species homologues information, please contact tech support at tech@phytoab.com.

Application Example



Recom: 2.5 ng, 10 ng and 25 ng recombinant protein containing the peptide for immunization and having a molecular mass of 50 kDa.

Electrophoresis: 12% SDS-PAGE

Transfer: blotting to NC (nitrocellulose) membrane for 1 h.

Blocking: 5% skim milk at RT or 4°C for 1 h.

Primary antibody: 1:1000 dilution overnight at 4°C.

Secondary antibody: 1:10000 dilution using Goat Anti-Rabbit IgG H&L (HRP) (Cat# PHY6000).

Detection: using chemiluminescence substrate and image were captured with CCD camera.