

Anti-PsaC subunit of photosystem I antibody

Catalog: PHY3299A

Product Information

Description:	Rabbit polyclonal antibody
Background:	Photosystem I (PSI) is a multisubunit complex that catalyses the final stage of the light reactions in chloroplasts. PsaC (ATCG01060) is a PSI subunit exposed to the stromal side of PSI and provides the ligands for two [4Fe-4S] clusters, FA and FB.
Synonyms:	PsaC, PSI-C
Immunogen:	KLH-conjugated synthetic peptide (14 aa from Central section) derived from <i>Arabidopsis thaliana</i> PsaC (ATCG01060)
Form:	Lyophilized
Quantity:	150 µg
Purification:	Immunogen affinity purified
Reconstitution:	Reconstitution with 150 µl of 0.01 M sterile PBS. "Note: please spin tube briefly prior to opening it to avoid any losses that might occur from lyophilized material adhering to the cap or sides of the tube".
Stability & Storage:	Use a manual defrost freezer and avoid repeated freeze-thaw cycles. 12 months from date of receipt, -20 to -70°C as supplied. 6 months, -20 to -70°C under sterile conditions after reconstitution. 1 month, 2 to 8°C under sterile conditions after reconstitution.
Shipping:	The product is shipped at 4°C. Upon receipt, store it immediately at the temperature recommended above.

Application Information

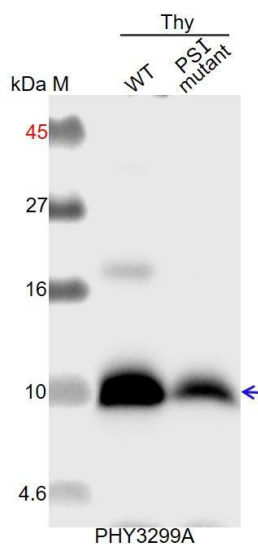
Recommended Dilution:	Western Blot (1:1000-1:2000) Note: Optimal dilutions/concentrations should be determined by the end user.
Expected / apparent MW:	9 kDa
Confirmed Reactivity:	<i>Arabidopsis thaliana</i>
Predicted Reactivity:	Among species analyzed, the sequence of the synthetic peptide used for immunization is 100% homologues with the sequence in <i>Sorghum</i>

Research Use Only

bicolor, *Brassica rapa*, *Gossypium raimondii*, *Medicago truncatula*, *Glycine max*, *Brassica napus*, *Populus trichocarpa*, *Zea mays*, *Spinacia oleracea*, *Physcomitrium patens*, *Triticum aestivum*, *Chlamydomonas reinhardtii*, *Oryza sativa*, *Cucumis sativus*, *Solanum tuberosum*, and 80-99% homologues with the sequence in *Synechocystis* sp. PCC 6803, *Panicum virgatum*.

For more species homologues information, please contact tech support at tech@phytoab.com.

Application Example



Thy-WT: thylakoid membrane protein from WT of *Arabidopsis thaliana* containing 2.5 µg of chlorophyll.

Thy-PS I : thylakoid membrane protein from an *Arabidopsis* mutant with low accumulation of PS I containing 2.5 µg of chlorophyll.

Electrophoresis: Tricine-SDS-PAGE

Transfer: blotting to NC (nitrocellulose) membrane for 1 h.

Blocking: 5% skim milk at RT or 4°C for 1 h.

Primary antibody: 1:2000 dilution overnight at 4°C.

Secondary antibody: 1:10000 dilution using Goat Anti-Rabbit IgG H&L(HRP) (Cat# PHY6000).

Detection: using chemiluminescence substrate and image were captured with CCD camera.