

# Anti-PsaB subunit of photosystem I antibody

Catalog: PHY0054A

## Product Information

<b>Description:</b>	Rabbit polyclonal antibody
<b>Background:</b>	The core of the photosystem I reaction center is formed by polypeptides PSI-A and PSI-B, the products of the homologous PsaA and PsaB genes. PsaB is a core protein of PSI complex.
<b>Synonyms:</b>	PsaB, Photosystem I P700 chlorophyll a apoprotein A2, PSI-B
<b>Immunogen:</b>	KLH-conjugated synthetic peptide (16 aa from C terminal section) derived from <i>Arabidopsis thaliana</i> PsaB (ATCG00340).
<b>Form:</b>	Lyophilized
<b>Quantity:</b>	150 µg
<b>Purification:</b>	Immunogen affinity purified
<b>Reconstitution:</b>	Reconstitution with 150 µl of 0.01M sterile PBS. "Note: please spin tube briefly prior to opening it to avoid any losses that might occur from lyophilized material adhering to the cap or sides of the tube".
<b>Stability &amp; Storage:</b>	Use a manual defrost freezer and avoid repeated freeze-thaw cycles. 12 months from date of receipt, -20 to -70°C as supplied. 6 months, -20 to -70°C under sterile conditions after reconstitution. 1 month, 2 to 8°C under sterile conditions after reconstitution.
<b>Shipping:</b>	The product is shipped at 4°C. Upon receipt, store it immediately at the temperature recommended above.

## Application Information

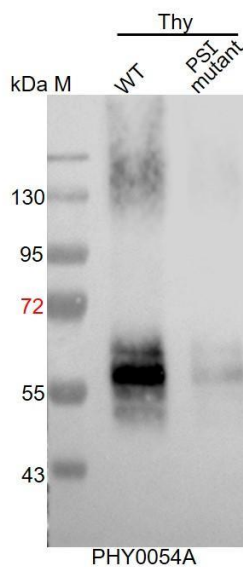
<b>Recommended Dilution:</b>	Western Blot (1:1000-1:4000) Note: Optimal dilutions/concentrations should be determined by the end user.
<b>Expected / apparent MW:</b>	82 kDa
<b>Confirmed Reactivity:</b>	<i>Arabidopsis thaliana</i>
<b>Predicted Reactivity:</b>	Among species analyzed, the sequence of the synthetic peptide used for immunization is 100% homologues with the sequence in <i>Brassica rapa</i> , <i>Medicago truncatula</i> , <i>Solanum tuberosum</i> , <i>Chlamydomonas reinhardtii</i> , <i>Oryza sativa</i> , <i>Zea mays</i> , <i>Brassica napus</i> , <i>Populus</i>

Research Use Only

*trichocarpa*, *Sorghum bicolor*, *Vitis vinifera*, *Triticum aestivum*, *Setaria viridis*, *Spinacia oleracea*, *Glycine max*, *Hordeum vulgare*, *Panicum virgatum*, *Solanum lycopersicum*, *Nicotiana tabacum*, *Cucumis sativus*, *Gossypium raimondii*, *Synechocystis* sp. PCC 6803, and 80-99% homologues with the sequence in *Physcomitrella patens*.

For more species homologues information, please contact tech support at [tech@phytoab.com](mailto:tech@phytoab.com).

## Application Example



Thy-WT: thylakoid membrane protein from WT of *Arabidopsis thaliana* containing 0.5 µg of chlorophyll.

Thy-PS I mutant: thylakoid membrane protein from an *Arabidopsis* mutant with low accumulation of PSI containing 0.5 µg of chlorophyll.

**Electrophoresis:** 12% SDS- PAGE

**Transfer:** blotting to NC (nitrocellulose) membrane for 1 h.

**Blocking:** 5% skim milk at RT or 4°C for 1 h.

← **Primary antibody:** 1:4000 dilution overnight at 4°C.

**Secondary antibody:** 1:10000 dilution using Goat Anti-Rabbit IgG H&L (HRP) (Cat# PHY6000)

**Detection:** using chemiluminescence substrate and image were captured with CCD camera.