

Anti-CP43 subunit of Photosystem II, E-loop antibody

Catalog: PHY0059A

Product Information

Description:	Rabbit polyclonal antibody
Background:	CP43 is a component of the proximal antenna of PSII and contains six transmembrane alpha helices and five hydrophilic loops that connect the membrane-spanning domains. CP43 is encoded by the <i>psbC</i> gene (ATCG00280).
Synonyms:	PsbC
Immunogen:	KLH-conjugated synthetic peptide (14 aa from C terminal section) derived from <i>Arabidopsis thaliana</i> PsbC (ATCG00280).
Form:	Lyophilized
Quantity:	150 µg
Purification:	Immunogen affinity purified
Reconstitution:	Reconstitution with 150 µl of 0.01 M sterile PBS. "Note: please spin tube briefly prior to opening it to avoid any losses that might occur from lyophilized material adhering to the cap or sides of the tube".
Stability & Storage:	Use a manual defrost freezer and avoid repeated freeze-thaw cycles. 12 months from date of receipt, -20 to -70°C as supplied. 6 months, -20 to -70°C under sterile conditions after reconstitution. 1 month, 2 to 8°C under sterile conditions after reconstitution.
Shipping:	The product is shipped at 4°C. Upon receipt, store it immediately at the temperature recommended above.

Application Information

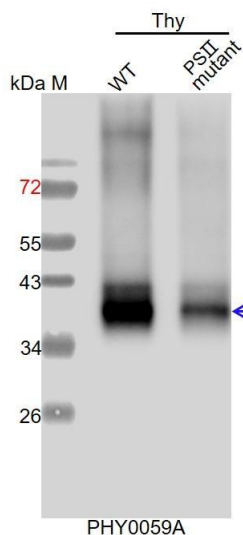
Recommended Dilution:	Western Blot (1:1000-1: 4000) Note: Optimal dilutions/concentrations should be determined by the end user.
Expected / apparent MW:	52 / 40 kDa
Confirmed Reactivity:	<i>Arabidopsis thaliana</i>
Predicted Reactivity:	Among species analyzed , the sequence of the synthetic peptide used for immunization is 100% homologues with the sequence in

Research Use Only

Brassica napus, *Medicago truncatula*, *Glycine max*, *Solanum tuberosum*, *Sorghum bicolor*, *Triticum aestivum*, *Zea mays*, *Vitis vinifera*, *Nicotiana tabacum*, *Oryza sativa*, *Setaria viridis*, *Cucumis sativus*, *Solanum lycopersicum*, *Spinacia oleracea*, *Physcomitrella patens*, *Leymus chinensis*, *Panicum virgatum*, *Gossypium raimondii*, *Populus trichocarpa*, *Hordeum vulgare*, and 80-99% homologues with the sequence in *Chlamydomonas reinhardtii*, *Synechocystis* sp. PCC 6803, *Synechococcus elongatus* PCC 7942.

For more species homologues information, please contact tech support at tech@phytoab.com.

Application Example



Thy-WT: thylakoid membrane protein from WT of *Arabidopsis thaliana* containing 0.25 µg of chlorophyll.

Thy-PS II mutant: thylakoid membrane protein from an *Arabidopsis* mutant with low accumulation of PS II containing 0.25 µg of chlorophyll.

Electrophoresis: 15% SDS- PAGE

Transfer: blotting to NC (nitrocellulose) membrane for 1 h.

Blocking: 5% skim milk at RT or 4°C for 1 h.

Primary antibody: 1:4000 dilution overnight at 4°C.

Secondary antibody: 1:10000 dilution using Goat Anti-Rabbit IgG H&L (HRP) (Cat# PHY6000)

Detection: using chemiluminescence substrate and image were

captured with CCD camera.