

Anti-60S ribosomal protein L13-1, N-terminal antibody

Catalog: PHY0182A

Product Information

Description:	Rabbit polyclonal antibody
Background:	60S ribosomal protein L13-1 is localized in the cytoplasm and belongs to the ribosomal protein L13e family. In Arabidopsis, L13e family contains three proteins (AT3G49010, AT5G23900, AT3G48960).
Synonyms:	RPL13B, 40S RIBOSOMAL PROTEIN, ATBBC1, BBC1, BREAST BASIC CONSERVED 1, RSU2
Immunogen:	KLH-conjugated synthetic peptide (14 aa from N terminal section) derived from <i>Arabidopsis thaliana</i> RPL13B (AT3G49010).
Form:	Lyophilized
Quantity:	150 µg
Purification:	Immunogen affinity purified
Reconstitution:	Reconstitution with 150 µl of 0.01 M sterile PBS. "Note: please spin tube briefly prior to opening it to avoid any losses that might occur from lyophilized material adhering to the cap or sides of the tube".
Stability & Storage:	Use a manual defrost freezer and avoid repeated freeze-thaw cycles. 12 months from date of receipt, -20 to -70°C as supplied. 6 months, -20 to -70°C under sterile conditions after reconstitution. 1 month, 2 to 8°C under sterile conditions after reconstitution.
Shipping:	The product is shipped at 4°C. Upon receipt, store it immediately at the temperature recommended above.

Application Information

Recommended Dilution:	Western Blot (1:1000-1:2000) Note: Optimal dilutions/concentrations should be determined by the end user.
Expected / apparent MW:	24 kDa
Confirmed Reactivity:	<i>Arabidopsis thaliana</i>
Predicted Reactivity:	Among species analyzed, the sequence of the synthetic peptide used for immunization is 100% homologues with the sequence in <i>Vitis vinifera</i> , <i>Triticum aestivum</i> , <i>Panicum virgatum</i> , <i>Zea mays</i> , <i>Sorghum</i>

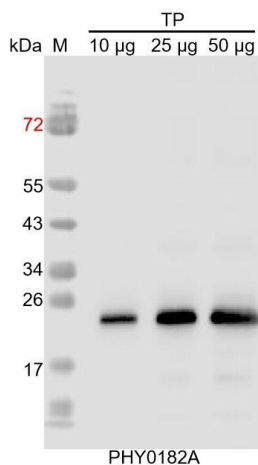
Research Use Only

bicolor, *Hordeum vulgare* subsp. *vulgare*, *Setaria viridis*, *Oryza sativa* Japonica Group, *Populus trichocarpa*, *Gossypium raimondii*, *Brassica napus*, *Brassica rapa*, *Nicotiana tabacum*, and 80-99% homologues with the sequence in *Glycine max*, *Spinacia oleracea*, *Solanum tuberosum*, *Solanum lycopersicum*, *Medicago truncatula*, *Physcomitrium patens*.

The sequence of the synthetic peptide used for immunization is 86% (12/14) homologues with the sequence in AT3G48960.

For more species homologues information, please contact tech support at tech@phytoab.com.

Application Example



TP: 10 µg, 25 µg and 50 µg total protein from *Arabidopsis thaliana*, respectively.

Electrophoresis: 15% SDS-Urea-PAGE

Transfer: blotting to NC (nitrocellulose) membrane for 1 h.

Blocking: 5% skim milk at RT or 4°C for 1 h.

Primary antibody: 1:1000 dilution overnight at 4°C.

Secondary antibody: 1:10000 dilution using Goat Anti-Rabbit IgG H&L (HRP) (Cat# PHY6000).

Detection: using chemiluminescence substrate and image were captured with CCD camera.