

# Anti-Subunit IV of Cyt b6/f complex antibody

Catalog: PHY0354A

## Product Information

<b>Description:</b>	Rabbit polyclonal antibody
<b>Background:</b>	Cytochrome b6-f complex subunit 4 is component of the cytochrome b6-f complex, which mediates electron transfer between photosystem II (PSII) and photosystem I (PSI), cyclic electron flow around PSI, and state transitions.
<b>Synonyms:</b>	PetD, PETD, PHOTOSYNTHETIC ELECTRON TRANSFER D
<b>Immunogen:</b>	KLH-conjugated synthetic peptide (15 aa from N terminal section) derived from <i>Arabidopsis thaliana</i> PetD (ATCG00730).
<b>Form:</b>	Lyophilized
<b>Quantity:</b>	150 µg
<b>Purification:</b>	Immunogen affinity purified
<b>Reconstitution:</b>	Reconstitution with 150 µl of 0.01 M sterile PBS. "Note: please spin tube briefly prior to opening it to avoid any losses that might occur from lyophilized material adhering to the cap or sides of the tube".
<b>Stability &amp; Storage:</b>	Use a manual defrost freezer and avoid repeated freeze-thaw cycles. 12 months from date of receipt, -20 to -70°C as supplied. 6 months, -20 to -70°C under sterile conditions after reconstitution. 1 month, 2 to 8°C under sterile conditions after reconstitution.
<b>Shipping:</b>	The product is shipped at 4°C. Upon receipt, store it immediately at the temperature recommended above.

## Application Information

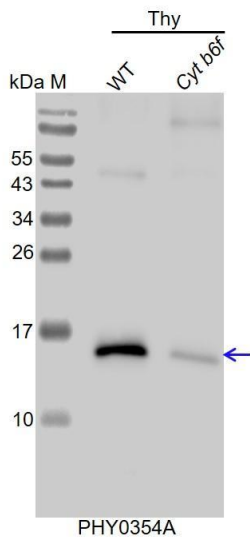
<b>Recommended Dilution:</b>	Western Blot (1:1000-1:2000) Note: Optimal dilutions/concentrations should be determined by the end user.
<b>Expected / apparent MW:</b>	17 / 16 kDa
<b>Confirmed Reactivity:</b>	<i>Arabidopsis thaliana</i>
<b>Predicted Reactivity:</b>	Among analyzed species, the sequence of the synthetic peptide used for immunization is 100% homologues with the sequence in <i>Zea mays</i> , <i>Brassica rapa</i> , <i>Panicum virgatum</i> , <i>Leymus chinensis</i> , <i>Setaria viridis</i> , <i>Oryza sativa</i> , <i>Solanum lycopersicum</i> , <i>Sorghum bicolor</i> ,

Research Use Only

*Medicago truncatula*, *Triticum aestivum*, *Cucumis sativus*, *Hordeum vulgare subsp. vulgare*, *Brassica napus*, *Populus trichocarpa*, *Synechococcus elongatus* PCC 7942, *Glycine max*, *Synechocystis sp.* PCC 6803, *Nicotiana tabacum*, *Spinacia oleracea*, *Solanum tuberosum*, *Physcomitrium patens*, *Gossypium raimondii*, and 80-99% homologues with the sequence in *Chlamydomonas reinhardtii*.

For more species homologues information, please contact tech support at [tech@phytoab.com](mailto:tech@phytoab.com).

## Application Example



with CCD camera.

**Thy-WT:** thylakoid membrane protein from *Arabidopsis thaliana* containing 0.5 µg of chlorophyll.

**Thy-Cyt b6f:** thylakoid membrane protein from *Arabidopsis* mutant with low accumulation of Cyt b6f complex containing 0.5 µg of chlorophyll.

**Electrophoresis:** 15% SDS-PAGE

**Transfer:** blotting to NC (nitrocellulose) membrane for 1 h.

**Blocking:** 5% skim milk at RT or 4°C for 1 h.

**Primary antibody:** 1:2000 dilution overnight at 4°C.

**Secondary antibody:** 1:10000 dilution using Goat Anti-Rabbit IgG H&L(HRP) (Cat# PHY6000).

**Detection:** using chemiluminescence substrate and image were captured