

# Anti-Low PSII Accumulation 1 antibody

Catalog: PHY0481S

## Product Information

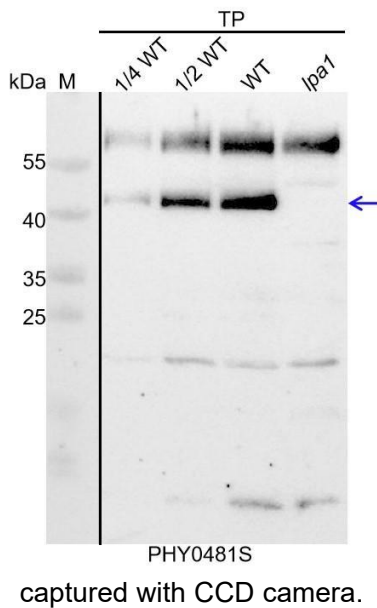
<b>Description:</b>	Rabbit polyclonal antibody
<b>Background:</b>	LPA1 is a chloroplast protein that contains two tetratricopeptide repeat domains and is an intrinsic membrane protein but not an integral subunit of PSII. In <i>Arabidopsis</i> , LPA1 interacts with PSII reaction center protein D1 and participates in the assembly of PSII.
<b>Synonyms:</b>	LPA1, LOW PSII ACCUMULATION1
<b>Immunogen:</b>	Recombinant protein (251-453 aa) derived from <i>Arabidopsis thaliana</i> LPA1 (AT1G02910).
<b>Form:</b>	Lyophilized
<b>Quantity:</b>	150 µg
<b>Purification:</b>	Serum
<b>Reconstitution:</b>	Reconstitution with 150 µl of sterile water. "Note: please spin tube briefly prior to opening it to avoid any losses that might occur from lyophilized material adhering to the cap or sides of the tube".
<b>Stability &amp; Storage:</b>	Use a manual defrost freezer and avoid repeated freeze-thaw cycles. 12 months from date of receipt, -20 to -70°C as supplied. 6 months, -20 to -70°C under sterile conditions after reconstitution. 1 month, 2 to 8°C under sterile conditions after reconstitution.
<b>Shipping:</b>	The product is shipped at 4°C. Upon receipt, store it immediately at the temperature recommended above.

## Application Information

<b>Recommended Dilution:</b>	Western Blot(1:1000-1:2000) Note: Optimal dilutions/concentrations should be determined by the end user.
<b>Expected / apparent MW:</b>	51 / 41 kDa
<b>Confirmed Reactivity:</b>	<i>Arabidopsis thaliana</i>
<b>Predicted Reactivity:</b>	For more species homologues information, please contact tech support at <a href="mailto:tech@phytoab.com">tech@phytoab.com</a> .

Research Use Only

## Application Example



**Thy-WT:** thylakoid membrane protein from *Arabidopsis thaliana* containing 0.625  $\mu\text{g}$  (1/4 WT), 1.25  $\mu\text{g}$  (1/2 WT) and 2.5  $\mu\text{g}$  (WT) of chlorophyll, respectively.

**Thy-*lpa1*:** thylakoid membrane protein from a *lpa1* mutant of *Arabidopsis thaliana* containing 2.5  $\mu\text{g}$  of chlorophyll.

**Electrophoresis:** 15% SDS-Urea-PAGE

**Transfer:** blotting to NC (nitrocellulose) membrane for 1 h.

**Blocking:** 5% skim milk at RT or 4°C for 1 h.

**Primary antibody:** 1:1000 dilution overnight at 4°C.

**Secondary antibody:** 1:10000 dilution using Goat Anti-Rabbit IgG H&L(HRP) (Cat# PHY6000).

**Detection:** using chemiluminescence substrate and image were