

Anti-Os02g0241200, C-terminal antibody

Catalog: PHY4269S

Product Information

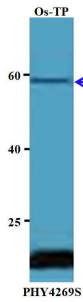
| | |
|---------------------------------|---|
| Description: | Rabbit polyclonal antibody |
| Background: | Myb-like DNA-binding domain, SHAQKYF class domain containing protein. (Os02t0241200-00) |
| Synonyms: | Os02g0241200 |
| Immunogen: | KLH-conjugated synthetic peptide (14 aa from C terminal section) derived from <i>Oryza sativa</i> Os02g0241200. |
| Form: | Lyophilized |
| Quantity: | 50 µg |
| Purification: | Serum |
| Reconstitution: | Reconstitution with 50µl of sterile water. "Note: please spin tube briefly prior to opening it to avoid any losses that might occur from lyophilized material adhering to the cap or sides of the tube". |
| Stability & Storage: | Use a manual defrost freezer and avoid repeated freeze-thaw cycles. 12 months from date of receipt, -20 to -70°C as supplied. 6 months, -20 to -70°C under sterile conditions after reconstitution. 1 month, 2 to 8°C under sterile conditions after reconstitution. |
| Shipping: | The product is shipped at 4°C. Upon receipt, store it immediately at the temperature recommended above. |

Application Information

| | |
|--------------------------------|--|
| Recommended Dilution: | Western Blot (1:100-1:250) Note: Optimal dilutions/concentrations should be determined by the end user. |
| Expected / apparent MW: | 59 kDa |
| Confirmed Reactivity: | <i>Oryza sativa</i> |
| Predicted Reactivity: | For more species homologues information, please contact tech support at tech@phytoab.com . |

Research Use Only

Application Example



Os-TP: total protein from *Oryza sativa*.

Primary antibody: 1:250 dilution overnight at 4°C.

Secondary antibody: 1:10000 dilution using Goat Anti-Rabbit IgG H&L(HRP) (Cat# PHY6000).

Detection: using chemiluminescence substrate and image were captured with CCD camera.