

Anti-Probable inactive receptor-like kinase BSK12 antibody

Catalog: PHY7181S

Product Information

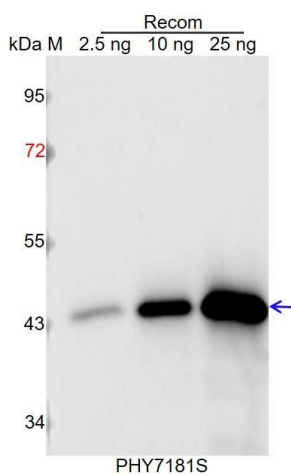
Description:	Rabbit polyclonal antibody
Background:	SSP is a N-myristoylated plasma membrane associated member of the RLCK II family of IRAK/Pelle-like kinases that regulates the MAPK pathway that promotes the elongation of the Arabidopsis zygote and the development of its basal daughter cell into the extra-embryonic suspensor. SSP transcripts are produced in mature pollen but are not translated until delivery to the zygote and the endosperm after fertilization, exerting a paternal effect on embryonic development. The primary role of its kinase domain may lie in protein binding rather than in catalysis as key residues of the active site are absent.
Synonyms:	SSP, BRASSINOSTEROID-SIGNALING KINASE 12, BSK12, SHORT SUSPENSOR
Immunogen:	KLH-conjugated synthetic peptide (18 aa from C terminal section) derived from <i>Arabidopsis thaliana</i> SSP (AT2G17090).
Form:	Lyophilized
Quantity:	150 µg
Purification:	Serum Peptide affinity form antibody available upon request at info@phytoab.com .
Reconstitution:	Reconstitution with 150 µl of sterile water. "Note: please spin tube briefly prior to opening it to avoid any losses that might occur from lyophilized material adhering to the cap or sides of the tube".
Stability & Storage:	Use a manual defrost freezer and avoid repeated freeze-thaw cycles. 12 months from date of receipt, -20 to -70°C as supplied. 6 months, -20 to -70°C under sterile conditions after reconstitution. 1 month, 2 to 8°C under sterile conditions after reconstitution.
Shipping:	The product is shipped at 4°C. Upon receipt, store it immediately at the temperature recommended above.

Research Use Only

Application Information

Recommended Dilution:	Western Blot (1:1000-1:2000)
	Note: Optimal dilutions/concentrations should be determined by the end user.
Expected / apparent MW:	52 kDa
Predicted Reactivity:	For more species homologues information, please contact tech support at tech@phytoab.com .

Application Example



Recom: 2.5 ng, 10 ng and 25 ng recombinant protein containing the peptide for immunization and having a molecular mass of 43 kDa.

Electrophoresis: 12% SDS-PAGE

Transfer: blotting to NC (nitrocellulose) membrane for 1 h.

Blocking: 5% skim milk at RT or 4°C for 1 h.

Primary antibody: 1:1000 dilution overnight at 4°C.

Secondary antibody: 1:10000 dilution using Goat Anti-Rabbit IgG H&L (HRP) (Cat# PHY6000).

Detection: using chemiluminescence substrate and image were captured with CCD camera.