

Anti-Cytochrome c biogenesis CcmF N-terminal-like mitochondrial protein 2 antibody

Catalog: PHY1456A

Product Information

Description:	Rabbit polyclonal antibody
Background:	CCMFN2 is located in the mitochondrial membrane which has been shown to be present in a number of unidentified complexes including a 500-KDa complex postulated to have heme lyase activity, in which another protein (AtCCMH, AT1G15220) is also involved.
Synonyms:	CCMFN2, CCB203, Cytochrome c biogenesis orf203, CC6BN2
Immunogen:	KLH-conjugated synthetic peptide (15 aa from C terminal section) derived from <i>Arabidopsis thaliana</i> CCMFN2 (ATMG00960).
Form:	Lyophilized
Quantity:	150 µg
Purification:	Immunogen affinity purified
Reconstitution:	Reconstitution with 150 µl of 0.01M sterile PBS. "Note: please spin tube briefly prior to opening it to avoid any losses that might occur from lyophilized material adhering to the cap or sides of the tube".
Stability & Storage:	Use a manual defrost freezer and avoid repeated freeze-thaw cycles. 12 months from date of receipt, -20 to -70°C as supplied. 6 months, -20 to -70°C under sterile conditions after reconstitution. 1 month, 2 to 8°C under sterile conditions after reconstitution.
Shipping:	The product is shipped at 4°C. Upon receipt, store it immediately at the temperature recommended above.

Application Information

Recommended Dilution:	Western Blot (1:1000-1:2000) Note: Optimal dilutions/concentrations should be determined by the end user.
Expected / apparent MW:	23 kDa
Predicted Reactivity:	Among analyzed species, the sequence of the synthetic peptide used for immunization is 100% homologues with the sequence in <i>Solanum tuberosum</i> , <i>Spinacia oleracea</i> , <i>Solanum lycopersicum</i> , <i>Nicotiana</i>

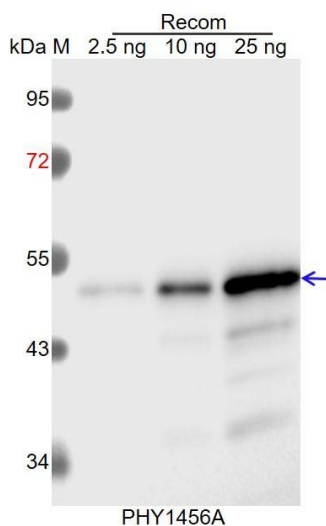
Research Use Only

tabacum, *Brassica rapa*, *Brassica napus*, and 80-99% homologues with the sequence in *Panicum virgatum*, *Sorghum bicolor*, *Oryza sativa*, *Setaria viridis*, *Triticum aestivum*, *Hordeum vulgare*, *Sorghum bicolor*, *Medicago truncatula*, *Gossypium raimondii*, *Glycine max*, *Zea mays*.

The sequence of the synthetic peptide used for immunization is 100% (15 / 15) homologues with the sequence in AT2G07768.

For more species homologues information, please contact tech support at tech@phytoab.com.

Application Example



Recom: 2.5 ng, 10 ng and 25 ng recombinant protein containing the peptide for immunization and having a molecular mass of 50 kDa.

Electrophoresis: 12% SDS-PAGE

Transfer: blotting to NC (nitrocellulose) membrane for 1 h.

Blocking: 5% skim milk at RT or 4°C for 1 h.

Primary antibody: 1:1000 dilution overnight at 4°C.

Secondary antibody: 1:10000 dilution using Goat Anti-Rabbit IgG H&L (HRP) (Cat# PHY6000).

Detection: using chemiluminescence substrate and image were captured with CCD camera.