

Anti-Nitrate reductase [NADH] 1 antibody

Catalog: PHY1149S

Product Information

Description:	Rabbit polyclonal antibody
Background:	<p>Assimilatory nitrate reductase is an enzyme of the assimilative metabolism involved in reduction of nitrate to nitrite. The nitrite is immediately reduced to ammonia (probably via hydroxylamine) by the activity of nitrite reductase.</p> <p>Plants contain 2 forms of NR: NADH-NR (most common form in plants and algae, predominantly found in green tissues) and NAD(P)H-NR (uses NADH or NADPH as the electron donor, constitutively expressed in plants at a low level).</p> <p>NADH-NR is a homodimer of two identical subunits (100-115 kDa each, hold together by a Mo-cofactor) each of them coded by up to three genes (NR1-3, NIA1-NIA3).</p>
Synonyms:	NR1, GNR1, NITRATE REDUCTASE 1
Immunogen:	KLH-conjugated synthetic peptide (15 aa from Central section) derived from <i>Arabidopsis thaliana</i> NR1 (AT1G77760).
Form:	Lyophilized
Quantity:	150 µg
Purification:	<p>Serum</p> <p>Peptide affinity form antibody available upon request at info@phytoab.com.</p>
Reconstitution:	<p>Reconstitution with 150 µl of sterile water.</p> <p>"Note: please spin tube briefly prior to opening it to avoid any losses that might occur from lyophilized material adhering to the cap or sides of the tube".</p>
Stability & Storage:	<p>Use a manual defrost freezer and avoid repeated freeze-thaw cycles.</p> <p>12 months from date of receipt, -20 to -70°C as supplied.</p> <p>6 months, -20 to -70°C under sterile conditions after reconstitution.</p> <p>1 month, 2 to 8°C under sterile conditions after reconstitution.</p>
Shipping:	The product is shipped at 4°C. Upon receipt, store it immediately at the temperature recommended above.

Application Information

Recommended Dilution:	<p>Western Blot (1:1000-1:2000)</p> <p>Note: Optimal dilutions/concentrations should be determined by the</p>
------------------------------	---

Research Use Only

end user.

Expected / apparent MW:

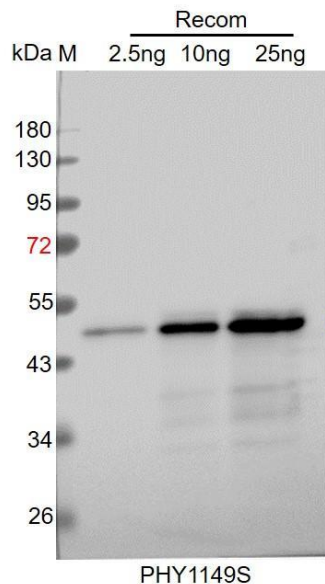
103 kDa

Predicted Reactivity:

Among species analyzed, the sequence of the synthetic peptide used for immunization is 100% homologues with the sequence in *Brassica napus*, *Brassica rapa*, and 80-99% homologues with the sequence in *Vitis vinifera*, *Sorghum bicolor*, *Panicum virgatum*, *Solanum lycopersicum*, *Solanum tuberosum*, *Zea mays*, *Gossypium raimondii*, *Nicotiana tabacum*, *Setaria viridis*, *Triticum aestivum*.

For more species homologues information, please contact tech support at tech@phytoab.com.

Application Example



Recom: 2.5 ng, 10 ng and 25 ng recombinant protein containing the peptide for immunization and having a molecular mass of 45 kDa.

Electrophoresis: 12% SDS-PAGE

Transfer: blotting to NC (nitrocellulose) membrane for 1 h.

Blocking: 5% skim milk at RT or 4°C for 1 h.

Primary antibody: 1:1000 dilution overnight at 4°C.

Secondary antibody: 1:10000 dilution using Goat Anti-Rabbit IgG H&L (HRP) (Cat# PHY6000).

Detection: using chemiluminescence substrate and image were captured with CCD camera.