

Anti-Tubulin beta chain 1/5 antibody

Catalog: PHY7105S

Product Information

Description:	Rabbit polyclonal antibody
Background:	TUB1/5
Synonyms:	TUB1/5
Immunogen:	KLH-conjugated synthetic peptide (14 aa from Central section) derived from <i>Arabidopsis thaliana</i> TUB1 (AT1G75780) and TUB5 (AT1G20010).
Form:	Lyophilized
Quantity:	150 µg
Purification:	Serum Peptide affinity form antibody available upon request at info@phytoab.com .
Reconstitution:	Reconstitution with 150 µl of sterile water. "Note: please spin tube briefly prior to opening it to avoid any losses that might occur from lyophilized material adhering to the cap or sides of the tube".
Stability & Storage:	Use a manual defrost freezer and avoid repeated freeze-thaw cycles. 12 months from date of receipt, -20 to -70°C as supplied. 6 months, -20 to -70°C under sterile conditions after reconstitution. 1 month, 2 to 8°C under sterile conditions after reconstitution.
Shipping:	The product is shipped at 4°C. Upon receipt, store it immediately at the temperature recommended above.

Application Information

Recommended Dilution:	Western Blot (1:1000-1:2000) Note: Optimal dilutions/concentrations should be determined by the end user.
Expected / apparent MW:	50 kDa
Predicted Reactivity:	Among species analyzed, the sequence of the synthetic peptide used for immunization is 100% homologues with the sequence in <i>Brassica rapa</i> , and 80-99% homologues with the sequence in <i>Oryza sativa</i> , <i>Hordeum vulgare</i> , <i>Physcomitrium patens</i> , <i>Zea mays</i> , <i>Vitis vinifera</i> , <i>Triticum aestivum</i> , <i>Sorghum bicolor</i> , <i>Panicum virgatum</i> , <i>Glycine max</i> ,

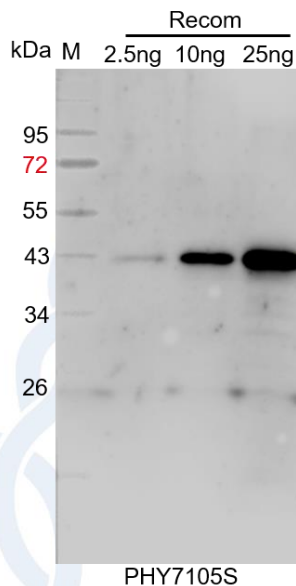
Research Use Only

Brassica napus, *Gossypium raimondii*, *Solanum tuberosum*,
Medicago truncatula, *Populus trichocarpa*, *Solanum lycopersicum*,
Nicotiana tabacum, *Spinacia oleracea*, *Cucumis sativus*.

The sequence of the synthetic peptide used for immunization is 93% (13/14) homologues with the sequence in TUB2 (AT5G62690), TUB3 (AT5G62700), TUB4 (AT5G44340), TUB6 (AT5G12250), TUB7 (AT2G29550), TUB8 (AT5G23860) and TUB9 (AT4G20890).

For more species homologues information, please contact tech support at tech@phytoab.com.

Application Example



Recom: 2.5 ng, 10 ng and 25 ng recombinant protein containing the peptide for immunization and having a molecular mass of 43 kDa.

Electrophoresis: 12% SDS-PAGE

Transfer: blotting to NC (nitrocellulose) membrane for 1 h.

Blocking: 5% skim milk at RT or 4°C for 1 h.

Primary antibody: 1:1000 dilution overnight at 4°C.

Secondary antibody: 1:10000 dilution using Goat Anti-Rabbit IgG H&L (HRP) (Cat# PHY6000).

Detection: using chemiluminescence substrate and image were captured with CCD camera.