

Anti-ATP synthase subunit 7, mitochondrial antibody

Catalog: PHY0593A

Product Information

Description:	Rabbit polyclonal antibody
Background:	Mitochondrial F0F1-ATP synthase is also called Complex V and it synthesizes ATP from ADP and Pi using the proton motive force created by respiratory electron transport. ATP7 (AT3G52300) is a subunit of mitochondrial F0F1-ATP synthase in <i>Arabidopsis</i> .
Synonyms:	ATPQ, ATP7, "ATP SYNTHASE D CHAIN, MITOCHONDRIAL"
Immunogen:	KLH-conjugated synthetic peptide (15 aa from Central section) derived from <i>Arabidopsis thaliana</i> ATPQ (AT3G52300).
Form:	Lyophilized
Quantity:	150 µg
Purification:	Immunogen affinity purified
Reconstitution:	Reconstitution with 150 µl of 0.01 M sterile PBS. "Note: please spin tube briefly prior to opening it to avoid any losses that might occur from lyophilized material adhering to the cap or sides of the tube".
Stability & Storage:	Use a manual defrost freezer and avoid repeated freeze-thaw cycles. 12 months from date of receipt, -20 to -70°C as supplied. 6 months, -20 to -70°C under sterile conditions after reconstitution. 1 month, 2 to 8°C under sterile conditions after reconstitution.
Shipping:	The product is shipped at 4°C. Upon receipt, store it immediately at the temperature recommended above.

Application Information

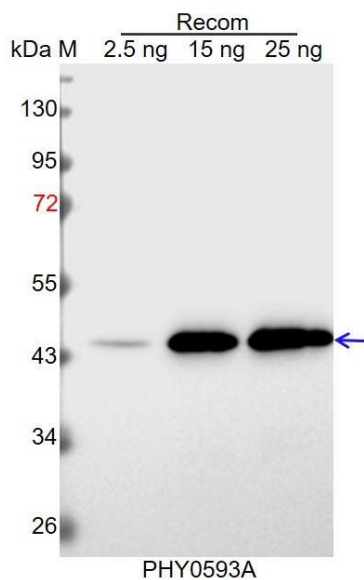
Recommended Dilution:	Western Blot (1:1000-1:2000) Note: Optimal dilutions/concentrations should be determined by the end user.
Expected / apparent MW:	20 kDa
Confirmed Reactivity:	<i>Arabidopsis thaliana</i>
Predicted Reactivity:	Among species analyzed, the sequence of the synthetic peptide used for immunization is 100% homologous with the sequence in <i>Glycine</i>

Research Use Only

max, and 80-99% homologues with the sequence in *Medicago truncatula*, *Gossypium raimondii*, *Cucumis sativus*, *Spinacia oleracea*, *Brassica rapa*, *Brassica napus*, *Solanum tuberosum*, *Nicotiana tabacum*, *Solanum lycopersicum*, *Panicum virgatum*, *Zea mays*, *Setaria viridis*, *Sorghum bicolor*, *Oryza sativa Japonica Group*, *Populus trichocarpa*, *Hordeum vulgare subsp. vulgare*, *Triticum aestivum*.

For more species homologues information, please contact tech support at tech@phytoab.com.

Application Example



Recom: 2.5 ng, 15 ng and 25 ng recombinant protein containing the peptide for immunization and having a molecular mass of 45 kDa.

Electrophoresis: 12% SDS-PAGE

Transfer: blotting to NC (nitrocellulose) membrane for 1 h.

Blocking: 5% skim milk at RT or 4°C for 1 h.

Primary antibody: 1:1000 dilution overnight at 4°C.

Secondary antibody: 1:10000 dilution using Goat Anti-Rabbit IgG H&L (HRP) (Cat# PHY6000).

Detection: using chemiluminescence substrate and image were captured with CCD camera.