

# Anti-ATP-dependent zinc metalloprotease FTSH 4, mitochondrial antibody

Catalog: PHY7348A

## Product Information

<b>Description:</b>	Rabbit polyclonal antibody
<b>Background:</b>	FTSH4 is an FtsH protease that is localized to the mitochondrion. Loss of function results in increased determinacy of the meristem that is exacerbated when plants are grown at higher temperatures.
<b>Synonyms:</b>	FTSH4, ATFTSH4, FTSH PROTEASE 4
<b>Immunogen:</b>	KLH-conjugated synthetic peptide (15 aa from C terminal section) derived from <i>Arabidopsis thaliana</i> FTSH4 (AT2G26140).
<b>Form:</b>	Lyophilized
<b>Quantity:</b>	150 µg
<b>Purification:</b>	Immunogen affinity purified
<b>Reconstitution:</b>	Reconstitution with 150 µl of 0.01 M sterile PBS. "Note: please spin tube briefly prior to opening it to avoid any losses that might occur from lyophilized material adhering to the cap or sides of the tube".
<b>Stability &amp; Storage:</b>	Use a manual defrost freezer and avoid repeated freeze-thaw cycles. 12 months from date of receipt, -20 to -70°C as supplied. 6 months, -20 to -70°C under sterile conditions after reconstitution. 1 month, 2 to 8°C under sterile conditions after reconstitution.
<b>Shipping:</b>	The product is shipped at 4°C. Upon receipt, store it immediately at the temperature recommended above.

## Application Information

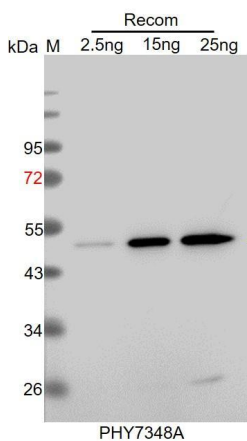
<b>Recommended Dilution:</b>	Western Blot (1:1000-1:2000) Note: Optimal dilutions/concentrations should be determined by the end user.
<b>Expected / apparent MW:</b>	77 kDa
<b>Predicted Reactivity:</b>	Among species analyzed, the sequence of the synthetic peptide used for immunization is 100% homologues with the sequence in <i>Brassica napus</i> , <i>Glycine max</i> , <i>Brassica rapa</i> , <i>Vitis vinifera</i> , and 80-99% homologues with the sequence in <i>Cucumis sativus</i> , <i>Triticum aestivum</i> , <i>Oryza sativa</i> ,

Research Use Only

*Solanum tuberosum*, *Solanum lycopersicum*, *Hordeum vulgare*,  
*Physcomitrium patens*, *Panicum virgatum*, *Setaria viridis*, *Zea mays*,  
*Nicotiana tabacum*, *Gossypium raimondii*.

For more species homologues information, please contact tech support at [tech@phytoab.com](mailto:tech@phytoab.com).

## Application Example



Recom: 2.5 ng, 15 ng and 25 ng recombinant protein containing the peptide for immunization and having a molecular mass of 50 kDa.

**Electrophoresis:** 12% SDS-PAGE

**Transfer:** blotting to NC (nitrocellulose) membrane for 1 h.

**Blocking:** 5% skim milk at RT or 4°C for 1 h.

**Primary antibody:** 1:1000 dilution overnight at 4°C.

**Secondary antibody:** 1:10000 dilution using Goat Anti-Rabbit IgG H&L (HRP) (Cat# PHY6000).

**Detection:** using chemiluminescence substrate and image were captured with CCD camera.