

Anti-Cytochrome c biogenesis CcmF N-terminal-like mitochondrial protein 1 antibody

Catalog: PHY2181A

Product Information

| | |
|---------------------------------|---|
| Description: | Rabbit polyclonal antibody |
| Background: | CCMFN1 can form a complex with CCMFC (ATMG00180), CCMFN2 (ATMG00960) and CCMH (AT1G15220) that performs the assembly of heme with c-type apocytochromes in mitochondria. |
| Synonyms: | CCMFN1, CCB382, CYTOCHROME C BIOGENESIS 382 |
| Immunogen: | KLH-conjugated synthetic peptide (16 aa from Central section) derived from <i>Arabidopsis thaliana</i> CCMFN1 (ATMG00830). |
| Form: | Lyophilized |
| Quantity: | 150 µg |
| Purification: | Immunogen affinity purified |
| Reconstitution: | Reconstitution with 150 µl of 0.01 M sterile PBS. "Note: please spin tube briefly prior to opening it to avoid any losses that might occur from lyophilized material adhering to the cap or sides of the tube". |
| Stability & Storage: | Use a manual defrost freezer and avoid repeated freeze-thaw cycles. 12 months from date of receipt, -20 to -70°C as supplied. 6 months, -20 to -70°C under sterile conditions after reconstitution. 1 month, 2 to 8°C under sterile conditions after reconstitution. |
| Shipping: | The product is shipped at 4°C. Upon receipt, store it immediately at the temperature recommended above. |

Application Information

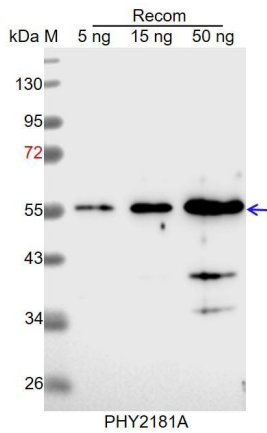
| | |
|------------------------------|--|
| Recommended Dilution: | Western Blot (1:1000-1:2000) Note: Optimal dilutions/concentrations should be determined by the end user. |
| Expected/apparent MW: | 43 kDa |
| Predicted Reactivity: | Among species analyzed, the sequence of the synthetic peptide used for immunization is 100% homologues with the sequence in <i>Brassica rapa</i> , <i>Brassica napus</i> , and 80-99% homologues with the sequence in <i>Gossypium raimondii</i> , <i>Spinacia oleracea</i> , <i>Vitis vinifera</i> , <i>Cucumis</i> |

Research Use Only

sativus, *Medicago truncatula*, *Glycine max*, *Populus trichocarpa*.

For more species homologues information, please contact tech support at tech@phytoab.com.

Application Example



Recom: 5 ng, 15 ng and 50 ng recombinant protein containing the peptide for immunization and having a molecular mass of 56 kDa.

Electrophoresis: 12% SDS-PAGE

Transfer: blotting to NC (nitrocellulose) membrane for 1 h.

Blocking: 5% skim milk at RT or 4°C for 1 h.

Primary antibody: 1:1000 dilution overnight at 4°C.

Secondary antibody: 1:10000 dilution using Goat Anti-Rabbit IgG H&L (HRP) (Cat# PHY6000).

Detection: using chemiluminescence substrate and image were captured with CCD camera.