

# Anti-Cellulose synthase A catalytic subunit 4 [UDP-forming], N-terminal antibody

Catalog: PHY0799A

## Product Information

<b>Description:</b>	Rabbit polyclonal antibody
<b>Background:</b>	CESA4 is involved in secondary cell wall biosynthesis. And it confers resistance towards bacterial and fungal pathogens, independent of salicylic acid, ethylene and jasmonate signaling. The Arabidopsis contains ten CESA proteins: CESA1 (AT5G44030), CESA2 (AT4G39350), CESA3 (AT5G05170), CESA4 (AT5G44030), CESA5 (AT5G09870), CESA6 (AT5G64740), CESA7 (AT5G17420), CESA8 (AT4G18780), CESA9 (AT2G21770) and CESA10 (AT2G25540).
<b>Synonyms:</b>	CESA4, CELLULOSE SYNTHASE A4, IRREGULAR XYLEM 5, IRX5, NWS2
<b>Immunogen:</b>	KLH-conjugated synthetic peptide (21 aa from N terminal section) derived from <i>Arabidopsis thaliana</i> CESA4 (AT5G44030).
<b>Form:</b>	Lyophilized
<b>Quantity:</b>	150 µg
<b>Purification:</b>	Immunogen affinity purified
<b>Reconstitution:</b>	Reconstitution with 150 µl of 0.01 M sterile PBS. "Note: please spin tube briefly prior to opening it to avoid any losses that might occur from lyophilized material adhering to the cap or sides of the tube".
<b>Stability &amp; Storage:</b>	Use a manual defrost freezer and avoid repeated freeze-thaw cycles. 12 months from date of receipt, -20 to -70°C as supplied. 6 months, -20 to -70°C under sterile conditions after reconstitution. 1 month, 2 to 8°C under sterile conditions after reconstitution.
<b>Shipping:</b>	The product is shipped at 4°C. Upon receipt, store it immediately at the temperature recommended above.

## Application Information

<b>Recommended Dilution:</b>	Western Blot (1:1000-1:2000) Note: Optimal dilutions/concentrations should be determined by the end user.
------------------------------	--

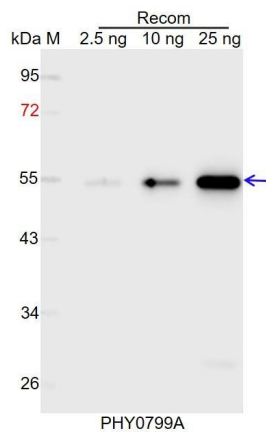
Research Use Only

**Expected / apparent MW:** 120 kDa

**Predicted Reactivity:** Among species analyzed, the sequence of the synthetic peptide used for immunization is 80-99% homologues with the sequence in *Brassica rapa*, *Brassica napus*.

For more species homologues information, please contact tech support at [tech@phytoab.com](mailto:tech@phytoab.com).

## Application Example



Recom: 2.5 ng, 10 ng and 25 ng recombinant protein containing the peptide for immunization and having a molecular mass of 54 kDa.

**Electrophoresis:** 12% SDS-PAGE

**Transfer:** blotting to NC (nitrocellulose) membrane for 1 h.

**Blocking:** 5% skim milk at RT or 4°C for 1 h.

**Primary antibody:** 1:1000 dilution overnight at 4°C.

**Secondary antibody:** 1:10000 dilution using Goat Anti-Rabbit IgG H&L (HRP) (Cat# PHY6000).

**Detection:** using chemiluminescence substrate and image were captured with CCD camera.