

Anti-Molybdenum cofactor sulfurase antibody

Catalog: PHY3175A

Product Information

Description:	Rabbit polyclonal antibody
Background:	ABA3 is involved in Moco biosynthesis and the conversion of ABA-aldehyde to ABA, the last step of abscisic acid (ABA) biosynthesis. The N terminal domain of ABA3 is similar to bacterial NifS suggesting a common mechanism for sulphur mobilization and transfer.
Synonyms:	ABA3, ABA DEFICIENT 3, ACI2, ALTERED CHLOROPLAST IMPORT 2, ATABA3, ATLOS5, GIN5, GLUCOSE INSENSITIVE 5, LOS5, LOW OSMOTIC STRESS 5, SIR3, SIRTINOL RESISTANT 3
Immunogen:	KLH-conjugated synthetic peptide (16 aa from C terminal section) derived from <i>Arabidopsis thaliana</i> ABA3 (AT1G16540).
Form:	Lyophilized
Quantity:	150 µg
Purification:	Immunogen affinity purified
Reconstitution:	Reconstitution with 150 µl of 0.01 M sterile PBS. "Note: please spin tube briefly prior to opening it to avoid any losses that might occur from lyophilized material adhering to the cap or sides of the tube".
Stability & Storage:	Use a manual defrost freezer and avoid repeated freeze-thaw cycles. 12 months from date of receipt, -20 to -70°C as supplied. 6 months, -20 to -70°C under sterile conditions after reconstitution. 1 month, 2 to 8°C under sterile conditions after reconstitution.
Shipping:	The product is shipped at 4°C. Upon receipt, store it immediately at the temperature recommended above.

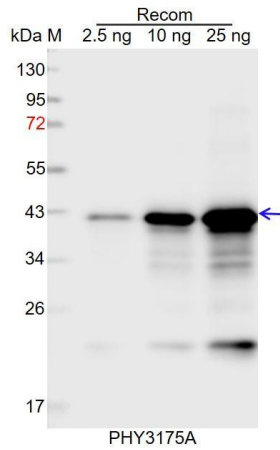
Application Information

Recommended Dilution:	Western Blot (1:1000-1:2000) Note: Optimal dilutions/concentrations should be determined by the end user.
Expected / apparent MW:	92 kDa
Predicted Reactivity:	For more species homologues information, please contact tech

Research Use Only

support at tech@phytoab.com.

Application Example



Recom: 2.5 ng, 10 ng and 25 ng recombinant protein containing the peptide for immunization and having a molecular mass of 42 kDa.

Electrophoresis: 12% SDS-PAGE

Transfer: blotting to NC (nitrocellulose) membrane for 1 h.

Blocking: 5% skim milk at RT or 4°C for 1 h.

Primary antibody: 1:1000 dilution overnight at 4°C.

Secondary antibody: 1:10000 dilution using Goat Anti-Rabbit IgG H&L (HRP) (Cat# PHY6000).

Detection: using chemiluminescence substrate and image were captured with CCD camera.