

Anti-PsaB subunit of photosystem I antibody

Catalog: PHY0054A

Product Information

Description:	Rabbit polyclonal antibody
Background:	The core of the photosystem I reaction center is formed by polypeptides PSI-A and PSI-B, the products of the homologous PsaA and PsaB genes. PsaB is a core protein of PSI complex.
Synonyms:	PsaB, Photosystem I P700 chlorophyll a apoprotein A2, PSI-B
Immunogen:	KLH-conjugated synthetic peptide (16 aa from C terminal section) derived from <i>Arabidopsis thaliana</i> PsaB (ATCG00340).
Form:	Lyophilized
Quantity:	150 µg
Purification:	Immunogen affinity purified
Reconstitution:	Reconstitution with 150 µl of 0.01M sterile PBS. "Note: please spin tube briefly prior to opening it to avoid any losses that might occur from lyophilized material adhering to the cap or sides of the tube".
Stability & Storage:	Use a manual defrost freezer and avoid repeated freeze-thaw cycles. 12 months from date of receipt, -20 to -70°C as supplied. 6 months, -20 to -70°C under sterile conditions after reconstitution. 1 month, 2 to 8°C under sterile conditions after reconstitution.
Shipping:	The product is shipped at 4°C. Upon receipt, store it immediately at the temperature recommended above.

Application Information

Recommended Dilution:	Western Blot (1:1000-1:4000) Note: Optimal dilutions/concentrations should be determined by the end user.
Expected / apparent MW:	82 kDa
Confirmed Reactivity:	<i>Arabidopsis thaliana</i>
Predicted Reactivity:	Among species analyzed, the sequence of the synthetic peptide used for immunization is 100% homologues with the sequence in <i>Brassica rapa</i> , <i>Medicago truncatula</i> , <i>Solanum tuberosum</i> , <i>Chlamydomonas reinhardtii</i> , <i>Oryza sativa</i> , <i>Zea mays</i> , <i>Brassica napus</i> , <i>Populus</i>

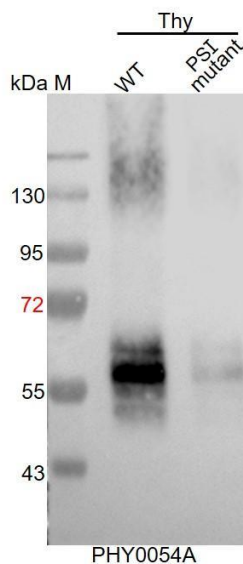
Research Use Only

trichocarpa, Sorghum bicolor, Vitis vinifera, Triticum aestivum, Setaria viridis, Spinacia oleracea, Glycine max, Hordeum vulgare, Panicum virgatum, Solanum lycopersicum, Nicotiana tabacum, Cucumis sativus, Gossypium raimondii, Synechocystis sp. PCC 6803, and 80-99% homologues with the sequence in Physcomitrella patens.

For more species homologues information, please contact tech support at tech@phytoab.com.

Application Example

Example1:



Thy-WT: thylakoid membrane protein from WT of *Arabidopsis thaliana* containing 0.5 µg of chlorophyll.

Thy-PS I mutant: thylakoid membrane protein from an *Arabidopsis* mutant with low accumulation of PSI containing 0.5 µg of chlorophyll.

Electrophoresis: 12% SDS- PAGE

Transfer: blotting to NC (nitrocellulose) membrane for 1 h.

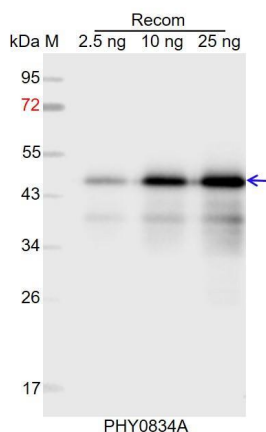
Blocking: 5% skim milk at RT or 4°C for 1 h.

← **Primary antibody:** 1:4000 dilution overnight at 4°C.

Secondary antibody: 1:10000 dilution using Goat Anti-Rabbit IgG H&L (HRP) (Cat# PHY6000)

Detection: using chemiluminescence substrate and image were captured with CCD camera.

Example2:



Recom: 2.5 ng, 10 ng and 25 ng recombinant protein containing the peptide for immunization and having a molecular mass of 48 kDa.

Electrophoresis: 12% SDS-PAGE

Transfer: blotting to NC (nitrocellulose) membrane for 1 h.

← **Blocking:** 5% skim milk at RT or 4°C for 1 h.

Primary antibody: 1:1000 dilution overnight at 4°C.

Secondary antibody: 1:10000 dilution using Goat Anti-Rabbit IgG H&L (HRP) (Cat# PHY6000).

Detection: using chemiluminescence substrate and image were captured with CCD camera.