

Anti-ABC transporter G family member 36 antibody

Catalog: PHY0177S

Product Information

Description:	Rabbit polyclonal antibody
Background:	In <i>Arabidopsis thaliana</i> , ABC transporter G family member 36 is one of the ABC transporter family consists of 130 members, which are assorted into eight groups (A-H). ABCG36 is involved in resistance of Arabidopsis to nonadapted and/or host-adapted pathogens, Contributing to nonhost resistance to inappropriate pathogens that enter by direct penetration in a salicylic acid-dependent manner.
Synonyms:	ABCG36, ARABIDOPSIS PLEIOTROPIC DRUG RESISTANCE 8, ARABIDOPSIS THALIANA ATP-BINDING CASSETTE G36, ATABCG36, ATP-BINDING CASSETTE G36, ATPDR8, PDR8, PEN3, PENETRATION 3, PLEIOTROPIC DRUG RESISTANCE 8
Immunogen:	KLH-conjugated synthetic peptide (16 aa from Central section) derived from <i>Arabidopsis thaliana</i> ABCG36 (AT1G59870).
Form:	Lyophilized
Quantity:	150 µg
Purification:	Serum Peptide affinity form antibody available upon request at info@phytoab.com .
Reconstitution:	Reconstitution with 150 µl of sterile water. "Note: please spin tube briefly prior to opening it to avoid any losses that might occur from lyophilized material adhering to the cap or sides of the tube".
Stability & Storage:	Use a manual defrost freezer and avoid repeated freeze-thaw cycles. 12 months from date of receipt, -20 to -70°C as supplied. 6 months, -20 to -70°C under sterile conditions after reconstitution. 1 month, 2 to 8°C under sterile conditions after reconstitution.
Shipping:	The product is shipped at 4°C. Upon receipt, store it immediately at the temperature recommended above.

Application Information

Recommended Dilution:	Western Blot (1:1000-1:2000) Note: Optimal dilutions/concentrations should be determined by the
------------------------------	--

Research Use Only

end user.

Expected / apparent MW:

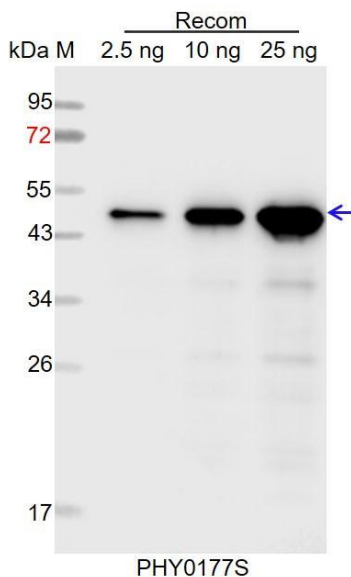
165 kDa

Predicted Reactivity:

Among species analyzed, the sequence of the synthetic peptide used for immunization is 100% homologues with the sequence in *Brassica rapa*, *Brassica napus*, *Gossypium raimondii*, *Glycine max*, *Populus trichocarpa*.

For more species homologues information, please contact tech support at tech@phytoab.com.

Application Example



Recom: 2.5 ng, 10 ng and 25 ng recombinant protein containing the peptide for immunization and having a molecular mass of 47 kDa.

Electrophoresis: 12% SDS-PAGE

Transfer: blotting to NC (nitrocellulose) membrane for 1 h.

Blocking: 5% skim milk at RT or 4°C for 1 h.

Primary antibody: 1:1000 dilution overnight at 4°C.

Secondary antibody: 1:10000 dilution using Goat Anti-Rabbit IgG H&L (HRP) (Cat# PHY6000).

Detection: using chemiluminescence substrate and image were captured with CCD camera.