

Anti-Kinesin-like protein KIN-14E, C-terminal antibody

Catalog: PHY1429A

Product Information

Description:	Rabbit polyclonal antibody
Background:	KCBP is a novel member of the kinesin superfamily of motor proteins. It is involved in the regulation of microtubule stability and trichome morphogenesis in plants. Some studies reveal the molecular mechanism of TCS1 (AT1G19835) and KCBP in trichome cell shape control.
Synonyms:	KCBP, KINESIN-LIKE CALMODULIN-BINDING PROTEIN, PKCBP, POTATO KINESIN-LIKE CALMODULIN-BINDING PROTEIN, ZWI, ZWICHEL
Immunogen:	KLH-conjugated synthetic peptide (23 aa from C terminal section) derived from <i>Arabidopsis thaliana</i> KCBP (AT5G65930).
Form:	Lyophilized
Quantity:	150 µg
Purification:	Immunogen affinity purified
Reconstitution:	Reconstitution with 150 µl of sterile 1XPBS (PH=7.4). "Note: please spin tube briefly prior to opening it to avoid any losses that might occur from lyophilized material adhering to the cap or sides of the tube".
Stability & Storage:	Use a manual defrost freezer and avoid repeated freeze-thaw cycles. 12 months from date of receipt, -20 to -70°C as supplied. 6 months, -20 to -70°C under sterile conditions after reconstitution. 1 month, 2 to 8°C under sterile conditions after reconstitution.
Shipping:	The product is shipped at 4°C. Upon receipt, store it immediately at the temperature recommended above.

Application Information

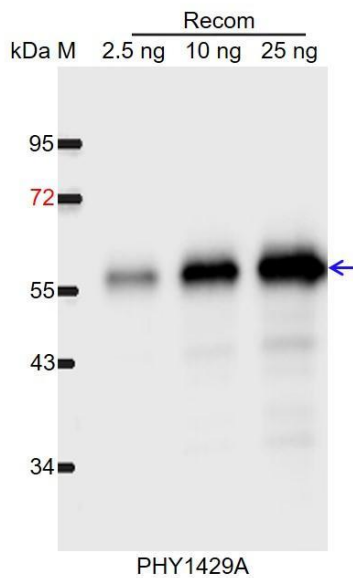
Recommended Dilution:	Western Blot (1:1000-1:2000) Note: Optimal dilutions/concentrations should be determined by the end user.
Expected / apparent MW:	144 kDa
Predicted Reactivity:	Among species analyzed, the sequence of the synthetic peptide used for immunization is 100% homologues with the sequence in <i>Brassica rapa</i> , <i>Brassica napus</i> , and 80-99% homologues with the sequence in

Research Use Only

Gossypium raimondii, *Populus trichocarpa*, *Medicago truncatula*, *Vitis vinifera*, *Nicotiana tabacum*.

For more species homologues information, please contact tech support at tech@phytoab.com.

Application Example



Recom: 2.5 ng, 10 ng and 25 ng recombinant protein containing the peptide for immunization and having a molecular mass of 56 kDa.

Electrophoresis: 12% SDS-PAGE

Transfer: blotting to NC (nitrocellulose) membrane for 1 h.

Blocking: 5% skim milk at RT or 4°C for 1 h.

Primary antibody: 1:1000 dilution overnight at 4°C.

Secondary antibody: 1:10000 dilution using Goat Anti-Rabbit IgG H&L (HRP) (Cat# PHY6000).

Detection: using chemiluminescence substrate and image were captured with CCD camera.